



Camden High Street | London | NW1

£600 Per Week |



ADN
RESIDENTIAL

Set on the top (third) floor of a well-located building on Camden High Street, this bright and modern apartment offers stylish accommodation in the heart of Camden.

The property features a spacious open-plan reception room and contemporary kitchen, two well-proportioned double bedrooms, and a sleek modern shower room. Wood flooring runs throughout, enhancing the apartment's clean and modern feel.

Ideally positioned just moments from Camden's vibrant selection of shops, cafés, restaurants, and entertainment venues, the property also benefits from excellent transport connections. Mornington Crescent Underground Station (Northern Line) is approximately 0.1 miles away, while Camden Town Underground Station (Northern Line) is approximately 0.2 miles from the property.

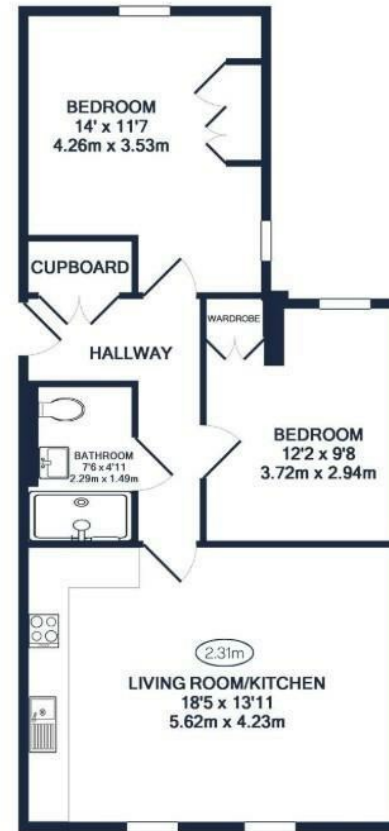
Please note that the building is subject to a car-free agreement and residents are therefore unable to obtain parking permits from the local authority.

-
- Two Bedrooms
 - Open Plan Kitchen / Reception Room
 - Shower Room
 - Modern Apartment
 - Prime Camden Location
-

Council Tax Band: D
EPC: E





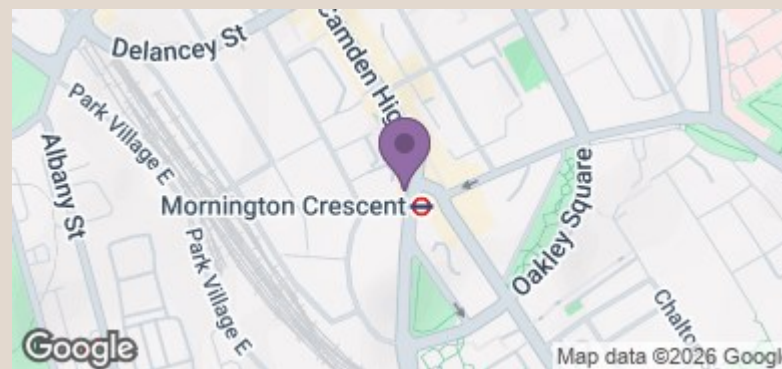


○ = Ceiling Height

TOTAL APPROX. FLOOR AREA 659 SQ.FT. (61.2 SQ.M.)

Whilst every attempt has been made to ensure the accuracy of the floor plan contained here, measurements of doors, windows, rooms and any other items are approximate and no responsibility is taken for any error, omission, or mis-statement. This plan is for illustrative purposes only and should be used as such by any prospective purchaser. The services, systems and appliances shown have not been tested and no guarantee as to their operability or efficiency can be given.

Made with Metropix ©2018



Energy Efficiency Rating		Current	Potential
Very energy efficient - lower running costs			
(92 plus) A			
(81-91) B			
(69-80) C			
(55-68) D			
(39-54) E		54	56
(21-38) F			
(1-20) G			
Not energy efficient - higher running costs			
England & Wales		EU Directive 2002/91/EC	