



## Haverstock Hill | London | NW3

Asking price £500,000 | Leasehold

 2  1  1  E

**ADN**  
RESIDENTIAL

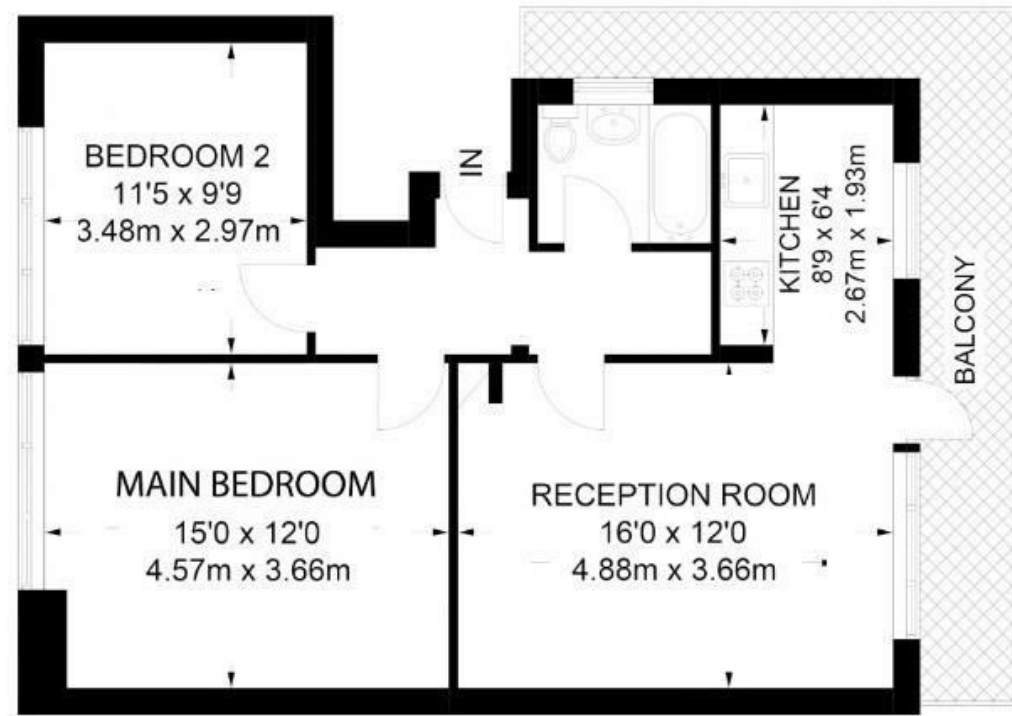
A beautifully presented and exceptionally bright two double bedroom apartment, occupying the top (third) floor of an elegant period residence in the heart of Belsize Park. Extending to approximately 638 sq ft, this superb home features a stylish semi open-plan kitchen and reception area with wooden flooring, seamlessly flowing onto a private balcony. The property further comprises two well-proportioned double bedrooms and a contemporary family bathroom. Heating is also included within the service charge.

- 2 Double Bedrooms
- Fully Fitted Kitchen
- Heating Included In Service Charge
- Spacious Reception Room
- Balcony

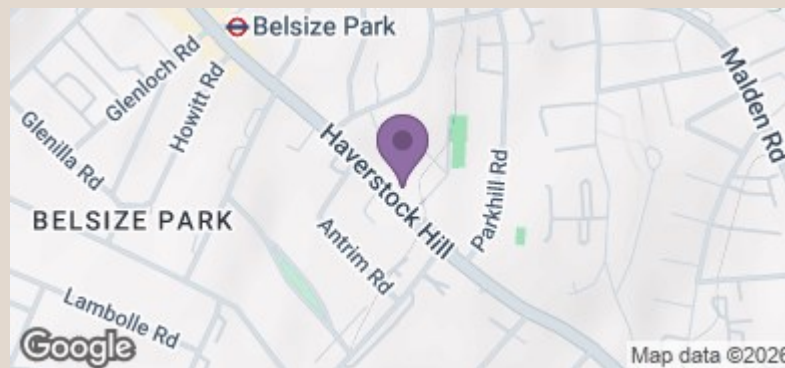
Council Tax Band: E  
EPC: E







**THIRD FLOOR**  
**638 SQ FT - 59.30 SQ M**  
**NOT TO SCALE**



| Energy Efficiency Rating                    |   | Current                 | Potential |
|---|---|-------------------------|-----------|
| Very energy efficient - lower running costs |   |                         |           |
| (92 plus)                                   | A |                         |           |
| (81-91)                                     | B |                         |           |
| (69-80)                                     | C |                         |           |
| (55-68)                                     | D |                         |           |
| (39-54)                                     | E | 49                      | 64        |
| (21-38)                                     | F |                         |           |
| (1-20)                                      | G |                         |           |
| Not energy efficient - higher running costs |   |                         |           |
| England & Wales                             |   | EU Directive 2002/91/EC |           |