



Woodside Avenue | London | N12

£1,500 Per month |

 1  1  1  C

ADN
RESIDENTIAL

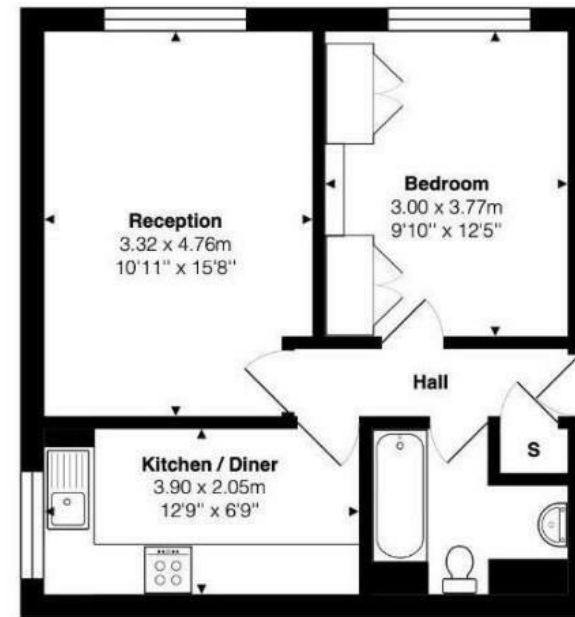
A newly refurbished one-bedroom apartment positioned on the ground floor of this attractive and well-kept purpose-built development in North Finchley. The accommodation features a bright and airy living room, a separate modern fitted kitchen, a spacious double bedroom with built-in wardrobes, and a contemporary family bathroom. Additional benefits include a private garage and excellent transport connections, with Woodside Park Underground Station (Northern Line) approximately 0.4 miles away and West Finchley Station around 0.7 miles from the property.

- Modern Apartment
- Reception Room
- Garage
- One Bedroom
- Bathroom
- Permit Parking

Council Tax Band: C
EPC: C



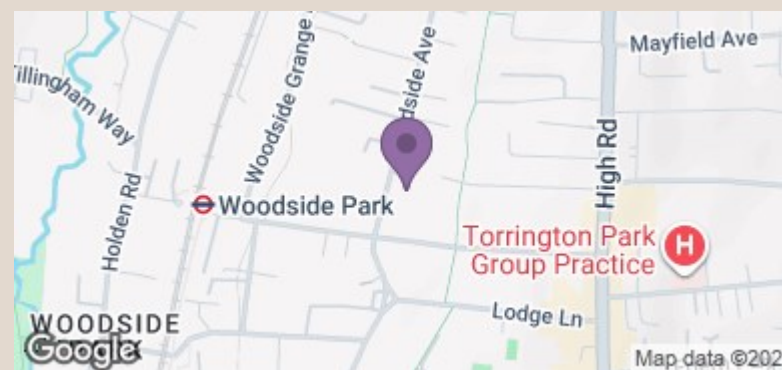




Ground Floor

Total Area: 45.2 m² ... 486 ft²

All measurements are approximate and for display purposes only



Energy Efficiency Rating		Current	Potential
Very energy efficient - lower running costs			
(92 plus) A			
(81-91) B			
(69-80) C			
(55-68) D			
(39-54) E			
(21-38) F			
(1-20) G			
Not energy efficient - higher running costs			
England & Wales		70	78
EU Directive 2002/91/EC			