



Ballards Lane | London | N3

£288 Per Week |



ADN
RESIDENTIAL

A modern studio apartment located in the heart of Finchley Central. This property benefits from having a bright studio room with fantastic storage and wooden flooring, separate fitted kitchen and a fully tiled shower room. Ballards Lane is ideally located 0.1m for Finchley Central Underground Station (Northern Line) and the local shops and amenities



- Studio Apartment
- Shower Room
- Permit Parking
- Kitchen
- Wooden Flooring
- Central Location

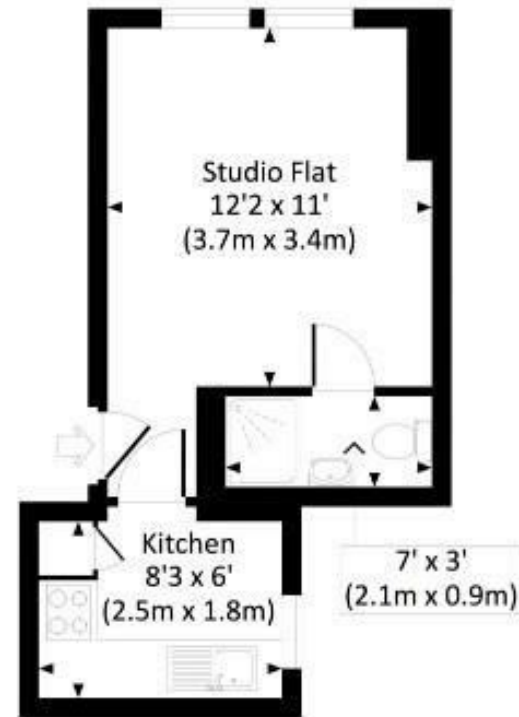
Council Tax Band: A
EPC: C



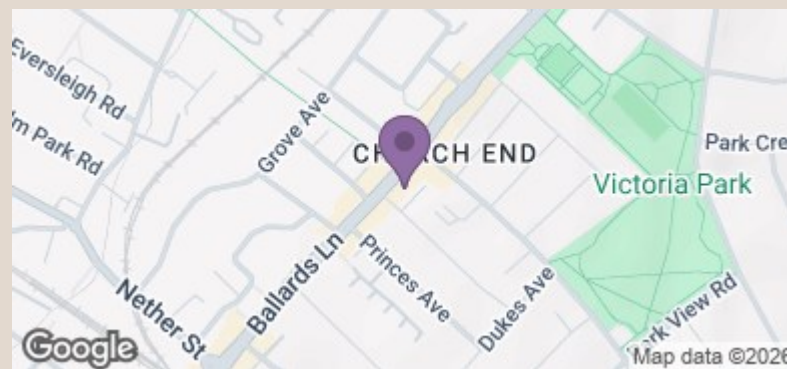


BALLARDS LANE, N3

Approx. gross internal area
228 Sq Ft. / 21.2 Sq M.



SECOND FLOOR



Energy Efficiency Rating		Current	Potential
Very energy efficient - lower running costs			
(92 plus) A			
(81-91) B			
(69-80) C		79	79
(55-68) D			
(39-54) E			
(21-38) F			
(1-20) G			
Not energy efficient - higher running costs			
England & Wales		EU Directive 2002/91/EC	