



Ballards Lane | London | N3

£1,200 Per Week |

 0  1  1  C

ADN
RESIDENTIAL

A modern studio apartment located in the heart of Finchley Central. This property benefits from having a bright studio room with fantastic storage, wooden flooring, open plan fitted kitchen and a fully tiled shower room. Ballards Lane is ideally located 0.1m for Finchley Central Underground Station (Northern Line) and the local shops and amenities

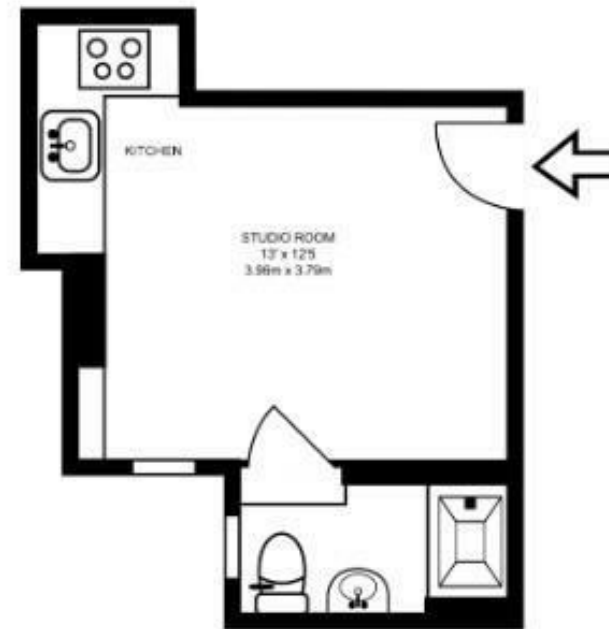


- Studio Apartment
- Shower Room
- Permit Parking
- Kitchen
- Wooden Flooring
- Central Location



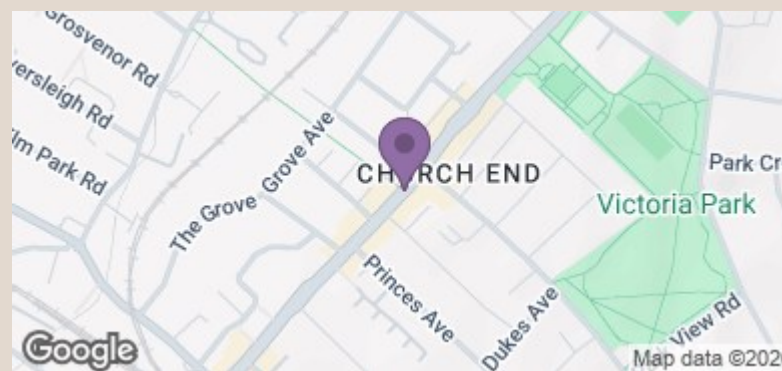
Council Tax Band: A
EPC: C





FIRST FLOOR
185 SQ FT/17.15 SQ M

This plan has been drawn for illustrative and identification purposes only.



Energy Efficiency Rating		Current	Potential
Very energy efficient - lower running costs			
(92 plus) A			
(81-91) B			
(69-80) C		72	74
(55-68) D			
(39-54) E			
(21-38) F			
(1-20) G			
Not energy efficient - higher running costs			

England & Wales EU Directive 2002/91/EC