



Arkwright Road | London | NW3

£2,850 Per Week |

 3  3  1  C

ADN
RESIDENTIAL

A beautifully presented and turnkey three bedroom, three bathroom ground floor apartment (1647 sq ft) situated in this stunning development in the centre of Hampstead. The property is air-conditioned and offers a modern luxurious living space whilst keeping the historic value of the original building. This outstanding home comprises of a large reception room, separate dining room, modern kitchen, three bedrooms, two with en-suite bathrooms and fitted wardrobes, utility room and a guest W/C. Further benefits include off-street parking for one car and access to communal garden. The property is located 0.3m to Hampstead Underground station (Northern line).

- Reception/Dining Room6
- 3 Bedrooms
- Air Conditioning
- Communal Gardens
- Kitchen
- 3 Bathrooms
- Guest W/C
- Off street Parking

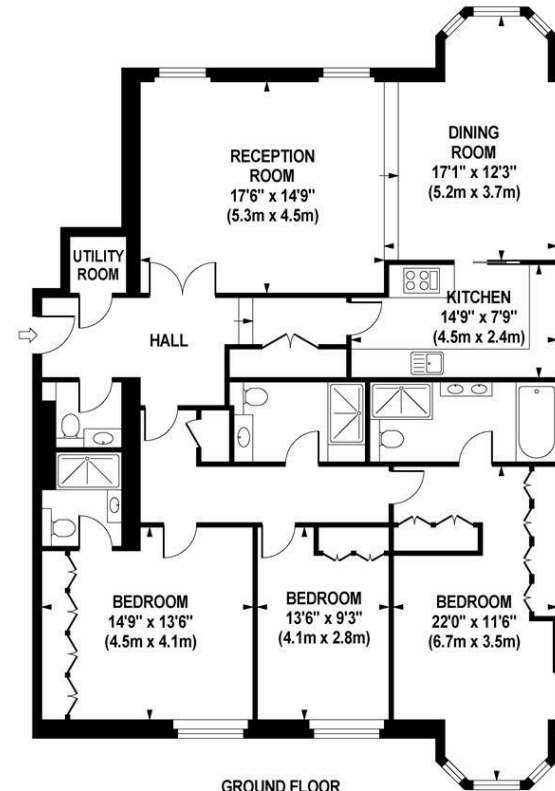
Council Tax Band: H
EPC: C







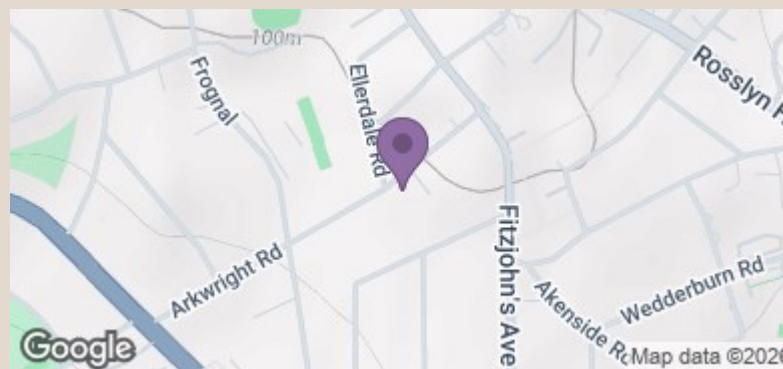
ARKWRIGHT ROAD
Approximate Gross Internal Area 1588 sq ft / 147.5 sq m



GROUND FLOOR
GROSS INTERNAL
FLOOR AREA 1588 SQ FT

Although every attempt has been made to ensure accuracy, all measurements are approximate. The floor plan is for illustrative purposes only and not to scale. Measured in accordance to RICS standards.

DE-PHOTOGRAPHY.NET



Energy Efficiency Rating		Current	Potential
Very energy efficient - lower running costs			
(92 plus)	A		
(81-91)	B		
(69-80)	C	77	77
(55-68)	D		
(39-54)	E		
(21-38)	F		
(1-20)	G		
Not energy efficient - higher running costs			
England & Wales		EU Directive 2002/91/EC	

info@adnresidential.co.uk | 020 7407 5155