



3 Fairmont Mews | London | NW2

£1,350 Per Week (Plus Fees)

 3  2  1  B

ADN
RESIDENTIAL

A luxury air conditioned, three bedroom, two bathroom penthouse apartment offering over 1500 sq ft of accommodation located in this desirable newly built block situated within 5 minutes of the amenities of Golders Green and Temple Fortune.

This fantastic property has a grand entrance with floor to ceiling windows and all the bedrooms and reception rooms lead directly onto the large roof terraces which overlook the manicured courtyard or have panoramic views across the southwest London skyline.

Benefits include landscaped communal gardens, on site 12 hour concierge, secure underground parking for 1 car and 800sqft fully fitted private gym, with changing room and WC for residents.

- Penthouse Apartment
- 2 Bathrooms
- Fitted kitchen
- Underground Parking
- Gym
- 3 Bedrooms
- Reception room
- Roof Terrace
- For One Car Concierge

Deposit: £8,100
£1,350 Per Week (Plus Fees)
Unfurnished
Council Tax Band: H
EPC: B





12 Waldorf Place, The Lexington, NW11

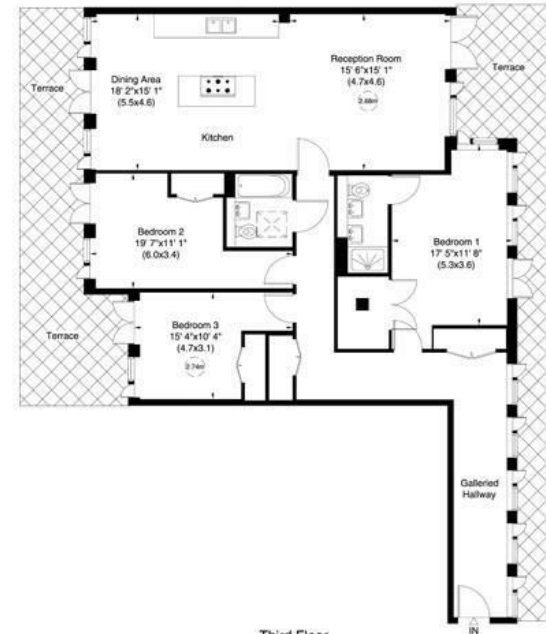
Gross internal area (approx.)

1504 Sq ft (140 Sq m)

For identification only, Not to Scale

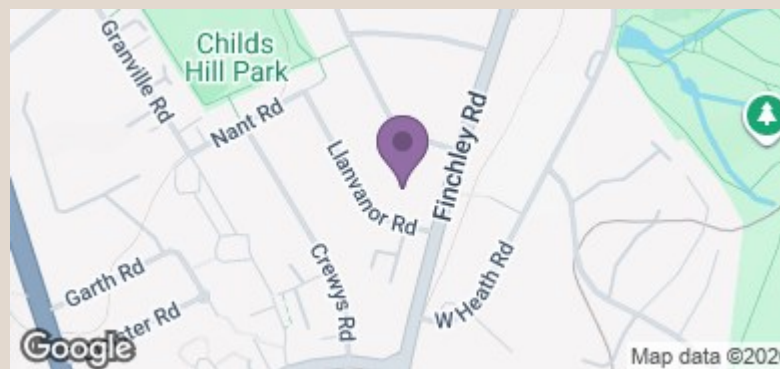


Floor Plan by **capital group** 020 8671 7722



Third Floor

Not to scale, for guidance only and must not be relied upon as a statement of fact. All measurements and areas are approximate only (and have been prepared in accordance with the current edition of the RICS Code of Measuring Practice).



Energy Efficiency Rating		Current	Potential
Very energy efficient - lower running costs			
(92 plus) A			
(81-91) B		81	81
(69-80) C			
(55-68) D			
(39-54) E			
(21-38) F			
(1-20) G			
Not energy efficient - higher running costs			
England & Wales		EU Directive 2002/91/EC	