



Lawn Road | London | NW3

£550 Per Week |

 2  1  1  C

ADN
RESIDENTIAL

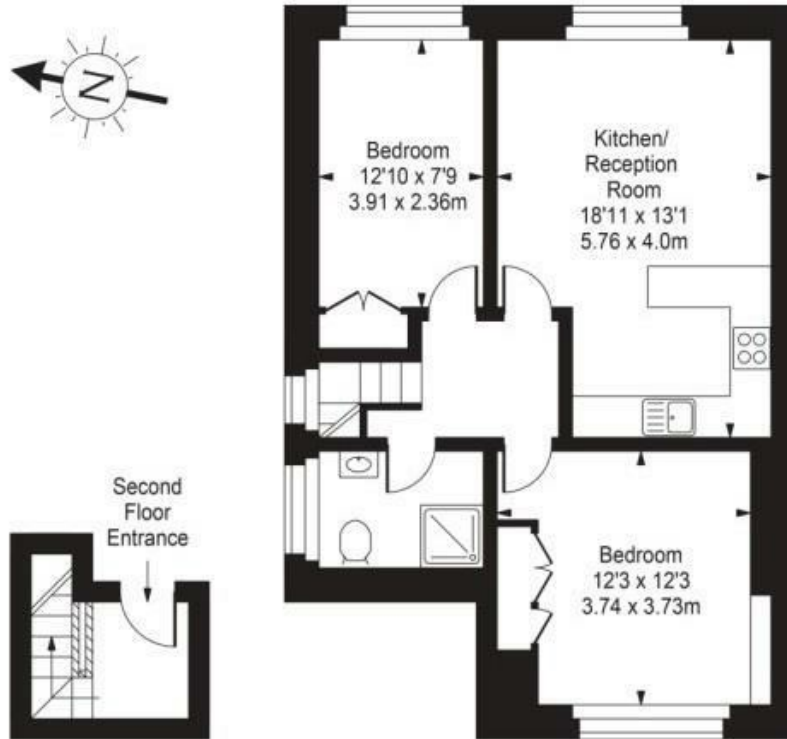
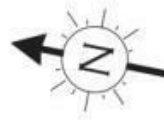
A bright and well appointed two double bedroom apartment arranged over the top (third) floor of a handsome period property located in Belsize Park. This fabulous property is currently being completely redecorated and comprises, open plan kitchen/reception room, principal bedroom with built in storage, second double bedroom and a shower room. Additional benefits include double glazed windows and wooden flooring.

-
- Two Double Bedrooms
 - Open Plan Kitchen/Reception Room
 - Shower Room
 - Wooden Flooring
 - Double Glazed Windows
 - Permit Parking
-

Council Tax Band: E
EPC: C

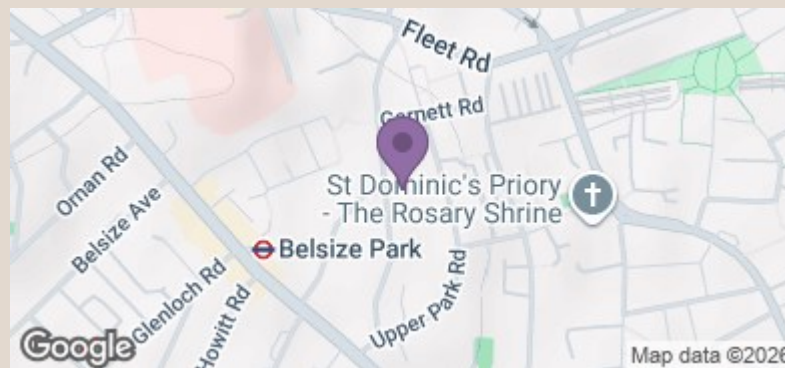


Lawn Road



Approx Gross Internal Area 680 Sq Ft - 63.15 Sq M

NOT TO SCALE



Energy Efficiency Rating		Current	Potential
Very energy efficient - lower running costs			
(92 plus)	A		
(81-91)	B		
(69-80)	C	69	72
(55-68)	D		
(39-54)	E		
(21-38)	F		
(1-20)	G		
Not energy efficient - higher running costs			
England & Wales		EU Directive 2002/91/EC	