



Kendal Street | London | W2

£519 Per Week |

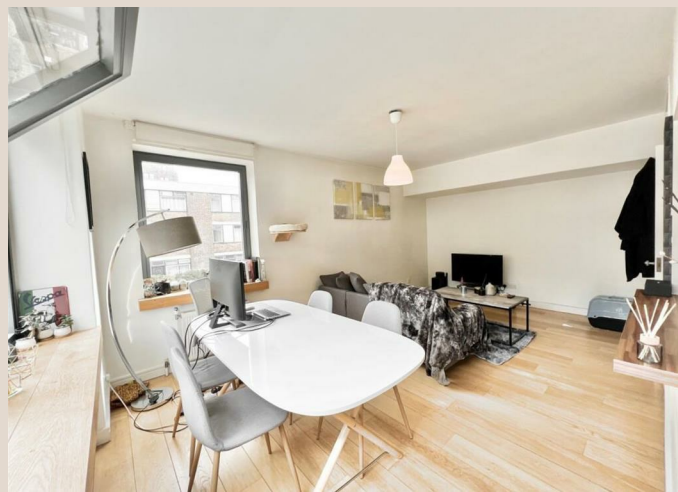
 1  1  1  D

ADN
RESIDENTIAL

A well presented first floor apartment situated in a popular portered block located 0.1m to Marble Arch & Hyde Park. This fantastic property benefits from wooden flooring and comprises; spacious reception room, modern fitted kitchen, principal bedroom with built-in wardrobes and a family bathroom. Additional benefits include inclusive heating and hot water, lift and access to communal gardens.

- Reception room
- One bedroom
- Lift
- Communal Gardens
- Kitchen
- Family Bathroom
- Porter

Council Tax Band: F
EPC: D

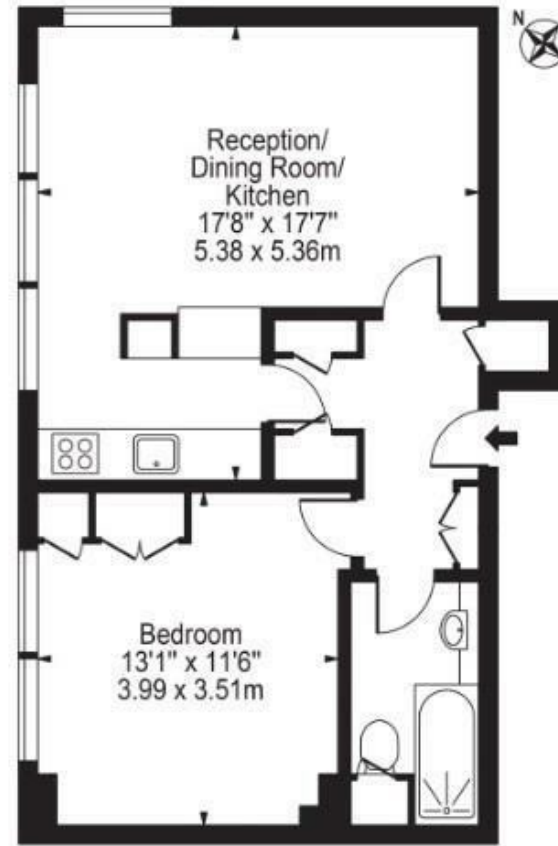




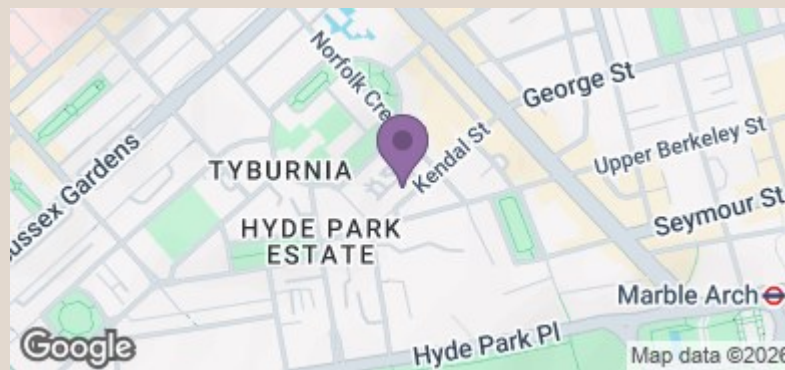


Coniston Court

Approx. Gross Internal Area 543 Sq Ft - 50.45 Sq M



First Floor
For Illustration Purposes Only - Not To Scale



Energy Efficiency Rating		Current	Potential
Very energy efficient - lower running costs			
(92 plus)	A		
(81-91)	B		
(69-80)	C		
(55-68)	D	61	70
(39-54)	E		
(21-38)	F		
(1-20)	G		
Not energy efficient - higher running costs			
England & Wales		EU Directive 2002/91/EC	