



Shirland Road | London | W9

£484 Per Week (Plus Fees)



ADN
RESIDENTIAL

A beautifully presented and brand newly refurbished one bedroom apartment arranged over the second floor of a period property located in Maida Vale. This outstanding property has been finished to a high standard and comprises, spacious open plan kitchen/reception room, double bedroom with built in storage and a fully tiled shower room. Additional benefits include a study area on the landing, double glazed windows and great natural light. Shirland Road is ideally located 0.5m from Maida Vale underground station. (Bakerloo Line)

- One Bedroom
- Open Plan Kitchen/Reception Room
- Shower Room
- Double Glazed
- Wooden Flooring

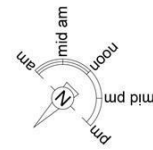
Deposit: £2,420
£484 Per Week (Plus Fees)
Unfurnished
Council Tax Band: C
EPC: E



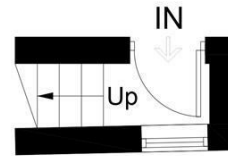


Shirland Road, W9

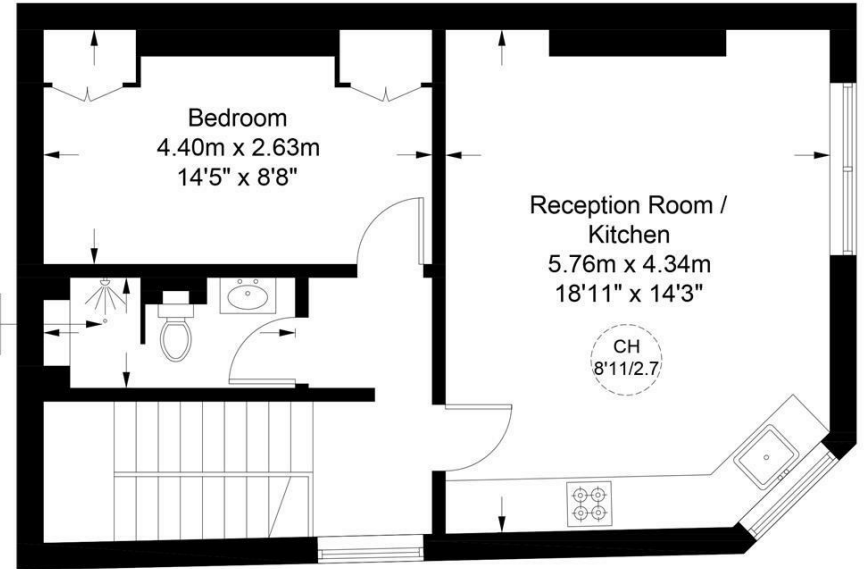
Approximate Gross Internal Area = 556 sq ft / 51.7 sq m



2.83m x 1.23m
9'3" x 4'0"



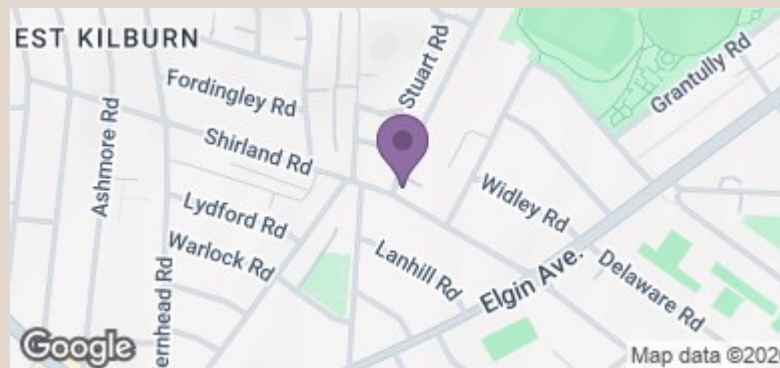
First Floor



Second Floor



This plan is for layout guidance only and is not drawn to scale unless stated. All dimensions, including windows, doors, and the Total Gross Internal Area (GIA), are approximate. For precise measurements, please consult a qualified architect or surveyor before making any decisions based on this plan.



Energy Efficiency Rating		Current	Potential
Very energy efficient - lower running costs			
(92 plus)	A		
(81-91)	B		
(69-80)	C		77
(55-68)	D		
(39-54)	E	51	
(21-38)	F		
(1-20)	G		
Not energy efficient - higher running costs			
England & Wales		EU Directive 2002/91/EC	

info@adnresidential.co.uk | 020 7407 5155