



Goldhurst Terrace | London | NW6

Asking price £990,000 | Leasehold

 3  2  1  E

ADN
RESIDENTIAL

A bright and spacious (1281 sq ft) three double bedroom upper duplex apartment arranged over the top two floors of a handsome red brick period property located in South Hampstead. This apartment offers the perfect blank canvass for someone to make it their own. The property benefits from having high ceilings, 2 bathrooms and a guest W/C. Goldhurst Terrace is ideally located 0.3m from both Swiss Cottage & Finchley Road underground stations. (Jubilee Line)

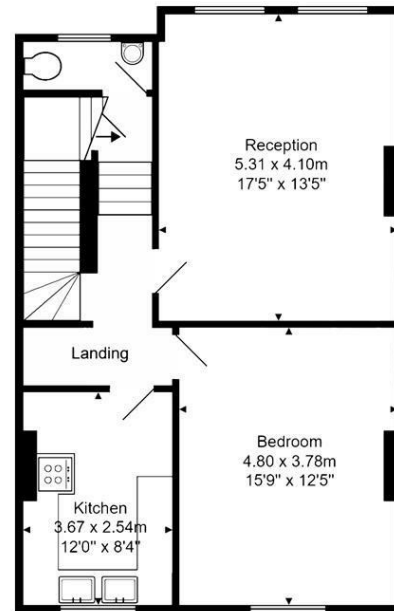


- Refurbishment Opportunity
- 2 Bathrooms
- Reception Room
- 3 Bedrooms
- Kitchen
- Permit Parking

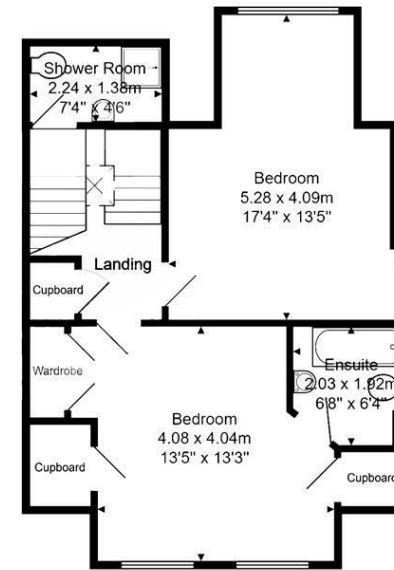
Council Tax Band: D
EPC: E







Second Floor

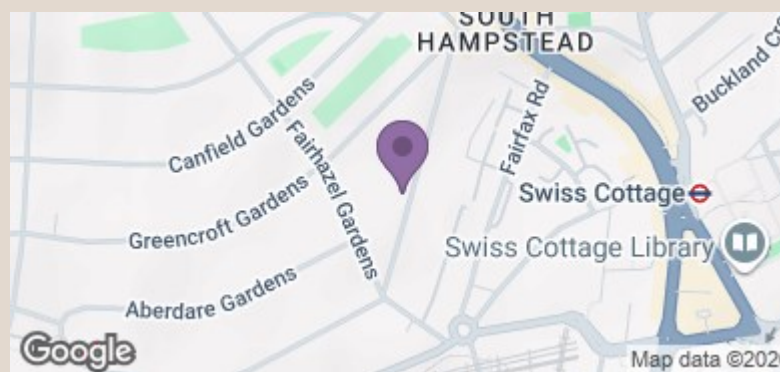


Third Floor



Total Area: 119.0 m² ... 1281 ft²

GIA measurements are approximate. Not to scale. Illustrative purposes only. Not for valuation



Energy Efficiency Rating		Current	Potential
Very energy efficient - lower running costs			
(92 plus)	A		
(81-91)	B		
(69-80)	C		77
(55-68)	D		
(39-54)	E	52	
(21-38)	F		
(1-20)	G		
Not energy efficient - higher running costs			
England & Wales		EU Directive 2002/91/EC	