



21 Beechcroft Avenue | London | NW11

£550 Per Week |



**ADN**  
RESIDENTIAL

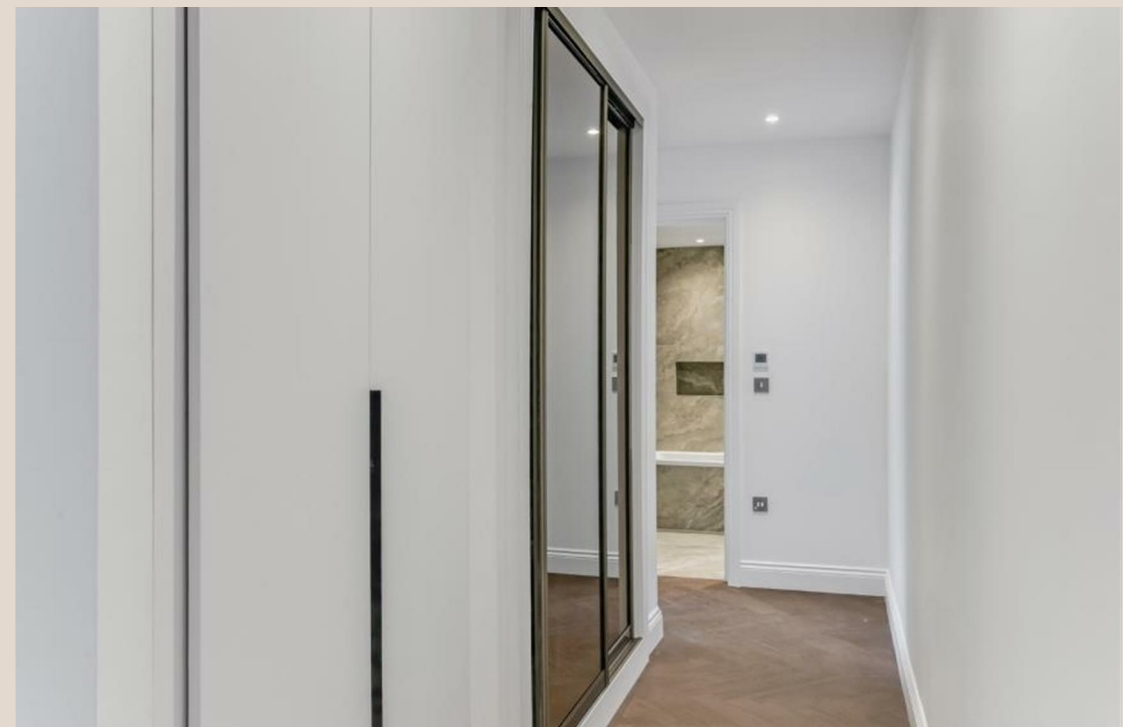
A beautifully presented and modern one bedroom apartment set within a high specification development on Beechcroft Avenue. Offering spacious and contemporary living, this beautifully designed home benefits from communal gardens. Boasting a generous layout, the apartment features a bright open plan living area with a modern fitted kitchen, with lots of natural light. Finished to an exceptional standard, this impressive home offers a perfect balance of luxury, comfort, and practicality. Further benefits include access to landscaped communal gardens and a prime location close to local amenities, shops, and excellent transport links.

- 
- One bedroom
  - Family Bathroom
  - Underground parking
  - Open plan kitchen/living room
  - Wooden flooring

---

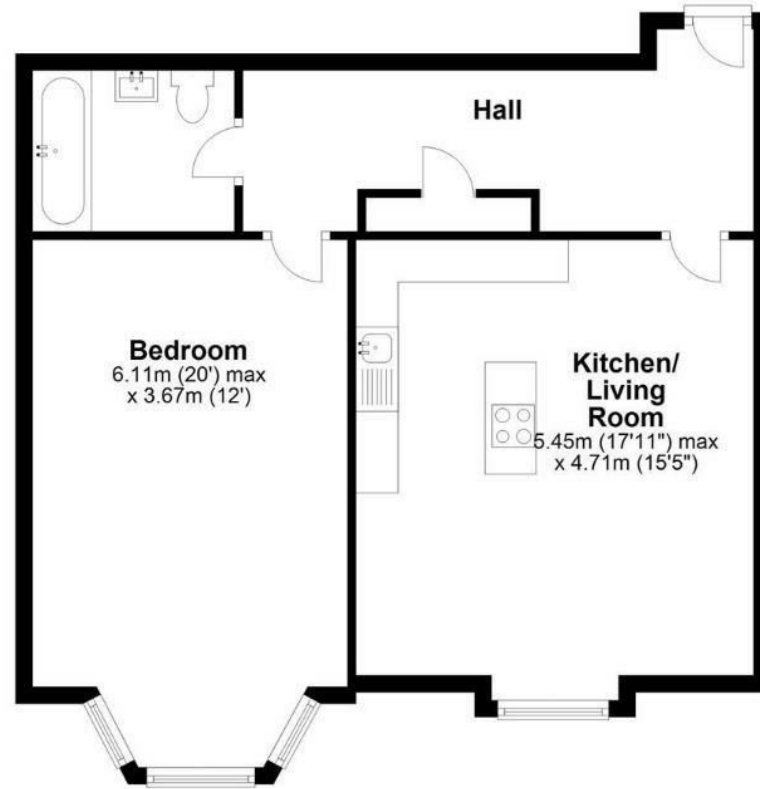
Council Tax Band: D  
EPC: B





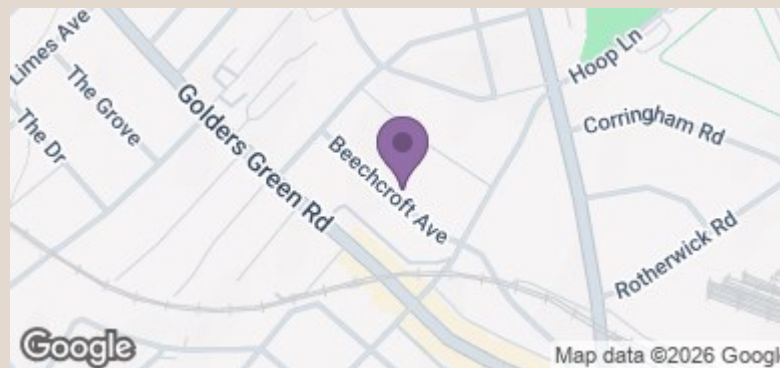


Approx. 64.5 sq. metres (694.2 sq. feet)



Total area: approx. 64.5 sq. metres (694.2 sq. feet)

The measurements given are approximate and are for illustration only. They should not be relied on for valuation. Plan produced using PlanUp.



Energy Efficiency Rating		Current	Potential
Very energy efficient - lower running costs			
(92 plus) <b>A</b>			
(81-91) <b>B</b>		88	88
(69-80) <b>C</b>			
(55-68) <b>D</b>			
(39-54) <b>E</b>			
(21-38) <b>F</b>			
(1-20) <b>G</b>			
Not energy efficient - higher running costs			

England & Wales EU Directive 2002/91/EC