



East Heath Road | London | NW3

£475 Per Week |



**ADN**  
RESIDENTIAL

A charming one bedroom house located in the heart of Hampstead Village being 0.1m to the famous open spaces of Hampstead Heath. This unique property benefits from having good storage and comprises, a bright reception room with fully fitted kitchen with separate utility cupboard, principal bedroom and a fully fitted family bathroom. Additional benefits include its own private entrance and wooden flooring.

- House
- Reception Room
- Bathroom
- One Bedroom
- Kitchen
- Wooden Flooring

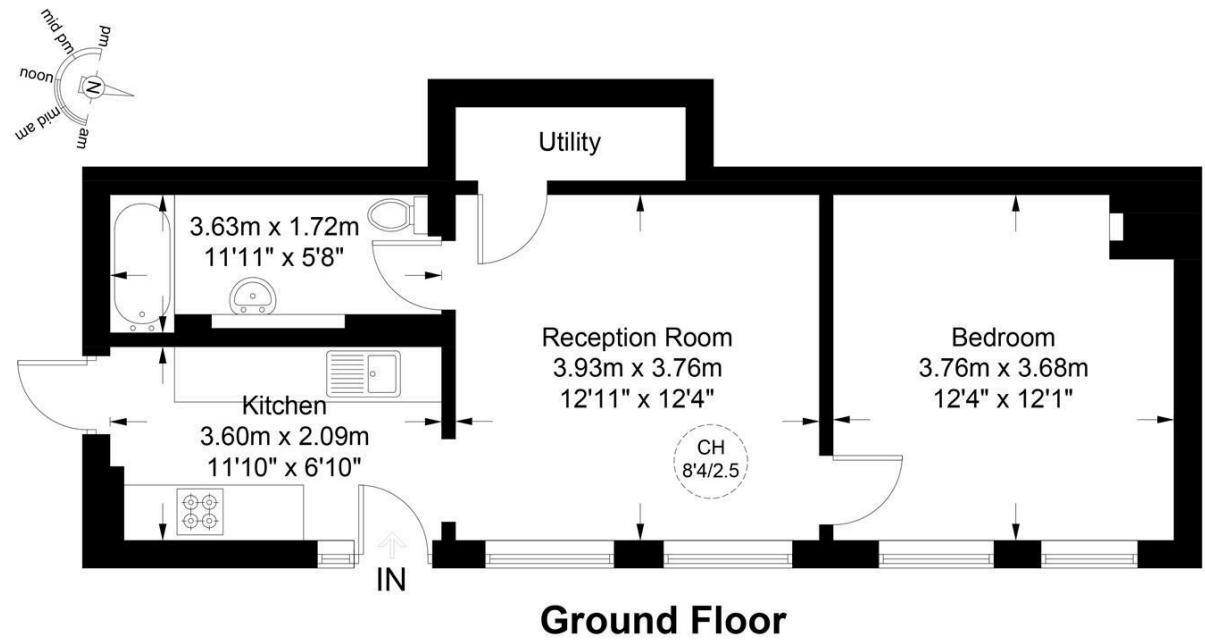
Council Tax Band: D  
EPC: E



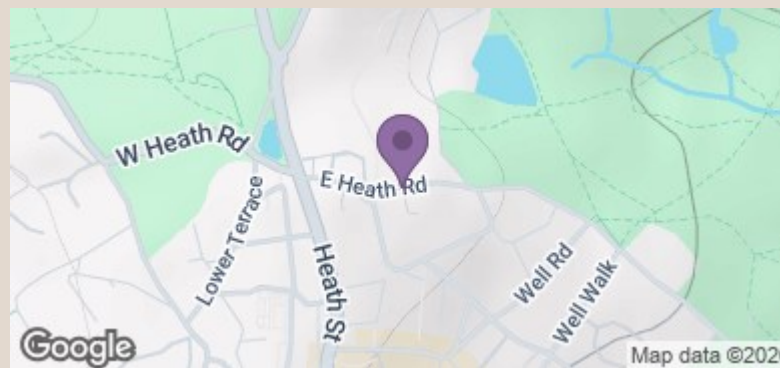


East Heath Road, NW3

Approximate Gross Internal Area = 494 sq ft / 45.9 sq m



This plan is for layout guidance only and is not drawn to scale unless stated. All dimensions, including windows, doors, and the Total Gross Internal Area (GIA), are approximate. For precise measurements, please consult a qualified architect or surveyor before making any decisions based on this plan.



Energy Efficiency Rating		Current	Potential
Very energy efficient - lower running costs			
(92 plus)	A		
(81-91)	B		
(69-80)	C		
(55-68)	D		
(39-54)	E	50	
(21-38)	F		
(1-20)	G		
Not energy efficient - higher running costs			
England & Wales		EU Directive 2002/91/EC	

info@adnresidential.co.uk | 020 7407 5155