



Queens Avenue | London | N10

£519 Per Week |

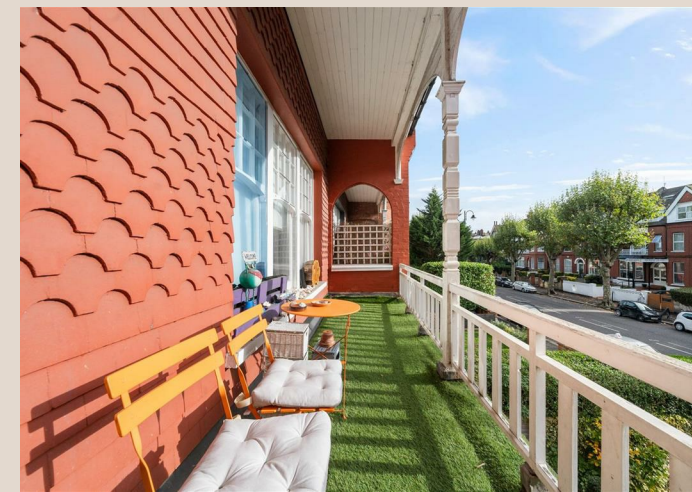
 2  1  1  C

ADN
RESIDENTIAL

A modern and spacious two bedroom apartment arranged over the first floor of a period conversion located in the heart of Muswell Hill. This wonderful apartment offers modern fixtures and fittings and comprises, spacious open plan kitchen/reception room with private balcony, principal bedroom, second bedroom and family bathroom. Further benefits include wooden flooring. Queens Avenue is ideally located 0.1m from the local amenities that Muswell Hill has to offer. Underground parking available by separate negotiation.

- 2 Bedrooms
- Open Plan Kitchen/Reception Room
- Balcony
- Family Bathroom
- Permit Parking
- Wooden Flooring

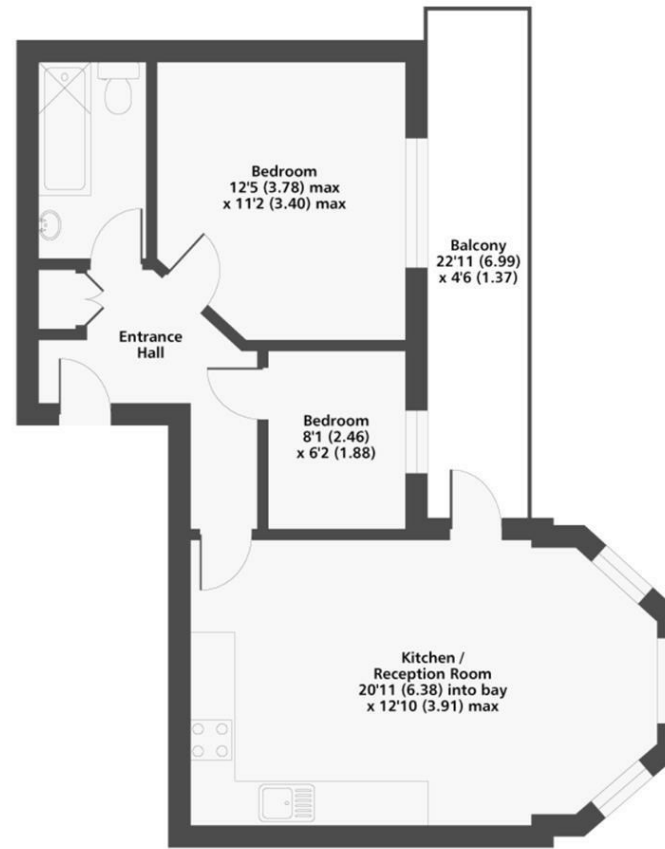
Council Tax Band: D
EPC: C







Queens Avenue N10
 Gross Internal Floor Area 565 sqft 52.5 sqm



First Floor



Energy Efficiency Rating		Current	Potential
Very energy efficient - lower running costs			
(92 plus) A			
(81-91) B			
(69-80) C		80	80
(55-68) D			
(39-54) E			
(21-38) F			
(1-20) G			
Not energy efficient - higher running costs			
England & Wales		EU Directive 2002/91/EC	