



Rochester Place | London | NW1

£576 Per Week |



ADN
RESIDENTIAL

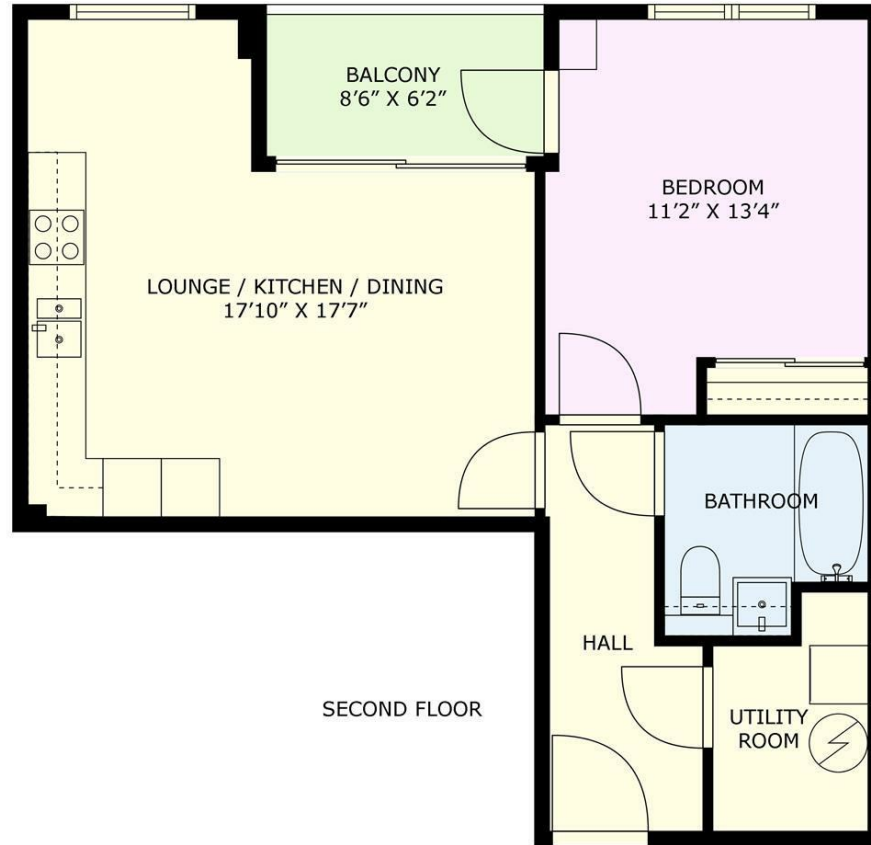
A modern and high specification one bedroom apartment located 0.1m Camden Road Station and 0.4m from Camden Town underground station. (Northern Line) This well appointed property benefits from having on site concierge and a large communal roof terrace and comprises, spacious open plan kitchen/living room with dining area with access onto the private balcony, generous double bedroom with built in storage, modern family bathroom and utility room. Additional, benefits include good storage and double glazed windows.

-
- Balcony
 - Open Plan Kitchen/Reception Room
 - Good Storage
 - Communal Roof Terrace
 - One Bedroom
 - Bathroom
 - Lift
 - Concierge
-

Council Tax Band: D
EPC: B





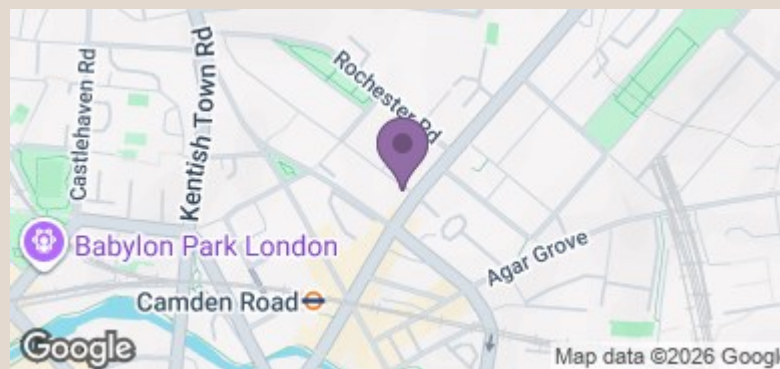


SECOND FLOOR



GROSS INTERNAL AREA: 517 SQ. FT | BALCONY AREA: 53 SQ. FT

This plan is for layout guidance only. Not drawn to scale unless stated. Windows and doors are approximate. Whilst every care is taken into the preparation of this plan, please check all dimensions, shapes and compass bearings before making any decisions reliant upon them.



Energy Efficiency Rating		
	Current	Potential
Very energy efficient - lower running costs		
(92 plus) A		
(81-91) B	84	84
(69-80) C		
(55-68) D		
(39-54) E		
(21-38) F		
(1-20) G		
Not energy efficient - higher running costs		
England & Wales	EU Directive 2002/91/EC	

info@adnresidential.co.uk | 020 7407 5155