



Belsize Park | London | NW3

£750 Per Week |



ADN
RESIDENTIAL

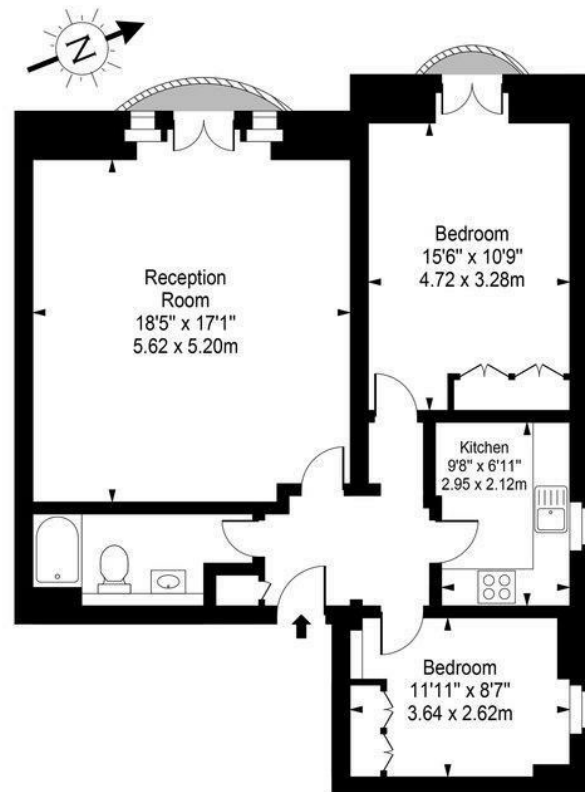
A bright and spacious two bedroom apartment arranged on the first floor of a beautiful white stucco property located in Belsize Village. This wonderful apartment benefits from having two balconies and comprises, generous reception room, separate fully fitted kitchen, two bedrooms and a family bathroom. Belsize Park is ideally located 0.2m from Swiss Cottage underground station (Jubilee Line) and the local amenities that Belsize Village has to offer

-
- 2 Balconies
 - Spacious Reception Room
 - Family Bathroom
 - 2 Bedrooms
 - Fully Fitted Kitchen
 - Permit Parking

Council Tax Band: F
EPC: C

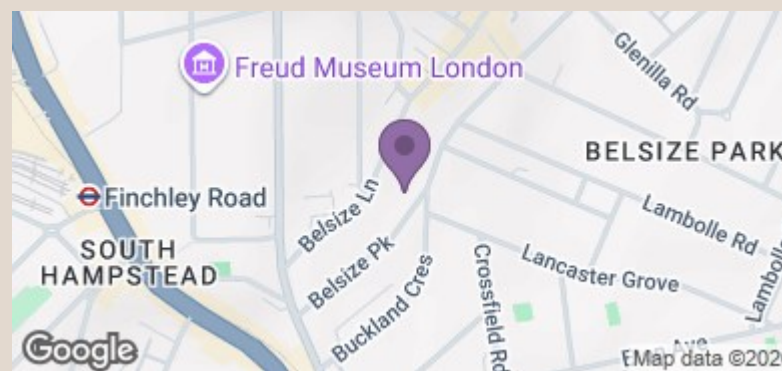






First Floor

Approx Gross Internal Area 839 Sq Ft - 77.95 Sq M



Energy Efficiency Rating		Current	Potential
Very energy efficient - lower running costs			
(92 plus)	A		
(81-91)	B		
(69-80)	C		
(55-68)	D		
(39-54)	E		
(21-38)	F		
(1-20)	G		
Not energy efficient - higher running costs			
England & Wales		71	80
EU Directive 2002/91/EC			