



Maryon Mews | London | NW3

£865 Per Week |

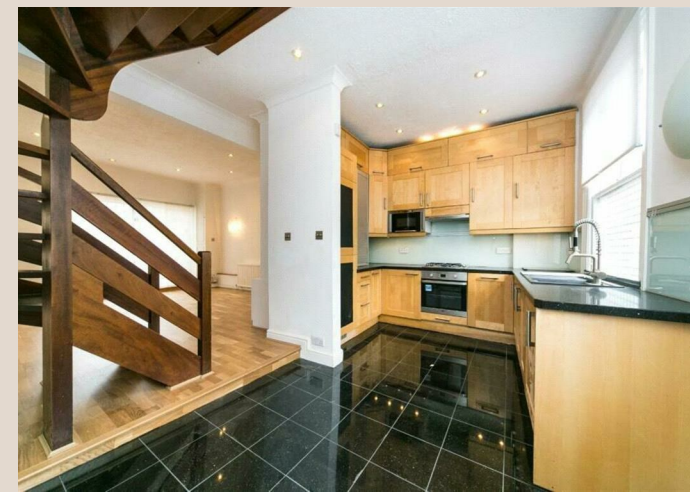
 2  1  1  E

ADN
RESIDENTIAL

A charming two bedroom 1st & 2nd floor maisonette set within this very popular mews located in the heart of South End Green being 0.1m to Hampstead Heath and a 0.5m to Belsize Park Underground station (Northern Line). The property is offered in great condition and comprises, spacious reception room with doors leading onto a large private roof terrace, fully fitted kitchen, principal bedroom with good storage, second bedroom and a family bathroom. Additional benefits include its own private entrance and wooden flooring throughout. Maryon Mews is set behind secure gates and must be seen.

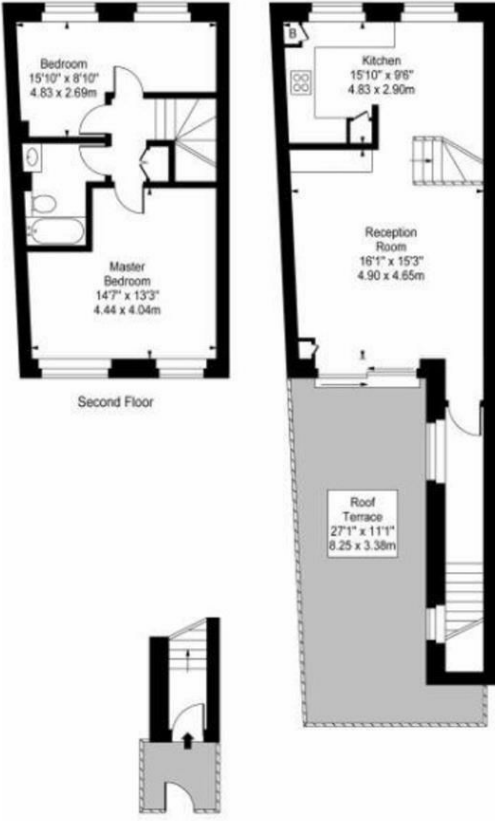
- 27" Roof Terrace
- Spacious Reception Room
- Kitchen
- 2 Bedrooms
- Family Bathroom
- Gated Mews

Council Tax Band: F
EPC: E

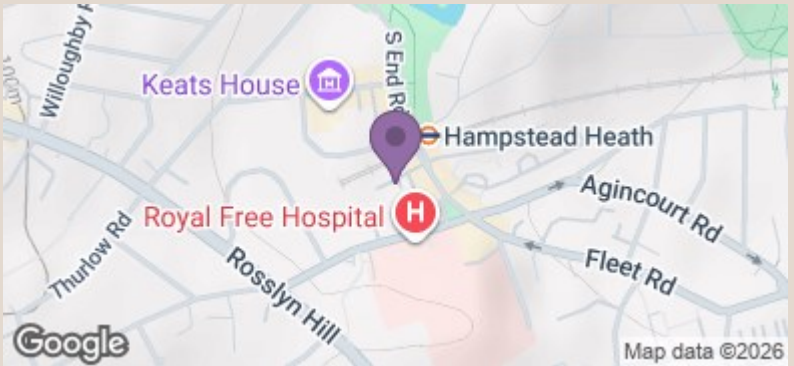




Maryon Mews, NW3



Approx Gross Internal Area **900 Sq Ft - 83.61 Sq M**
 For Illustration Purposes Only - Not To Scale



Energy Efficiency Rating		Current	Potential
Very energy efficient - lower running costs			
(92 plus) A			
(81-91) B			
(69-80) C			
(55-68) D			
(39-54) E		53	69
(21-38) F			
(1-20) G			
Not energy efficient - higher running costs			
England & Wales		EU Directive 2002/91/EC	