



Creswick Walk | London | NW11

Asking price £775,000 | Share of Freehold

 3  1  1  D

ADN
RESIDENTIAL

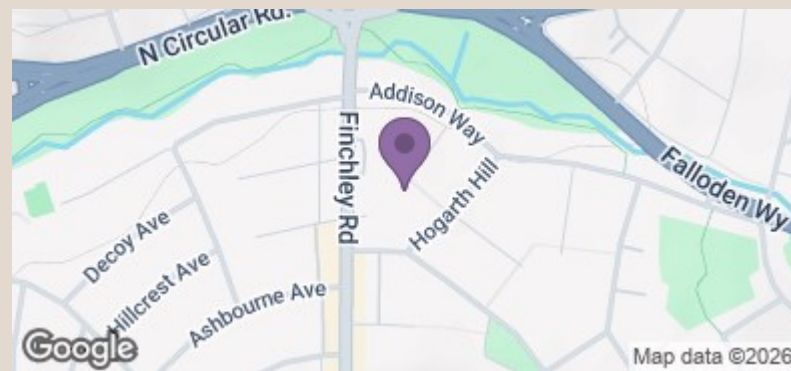
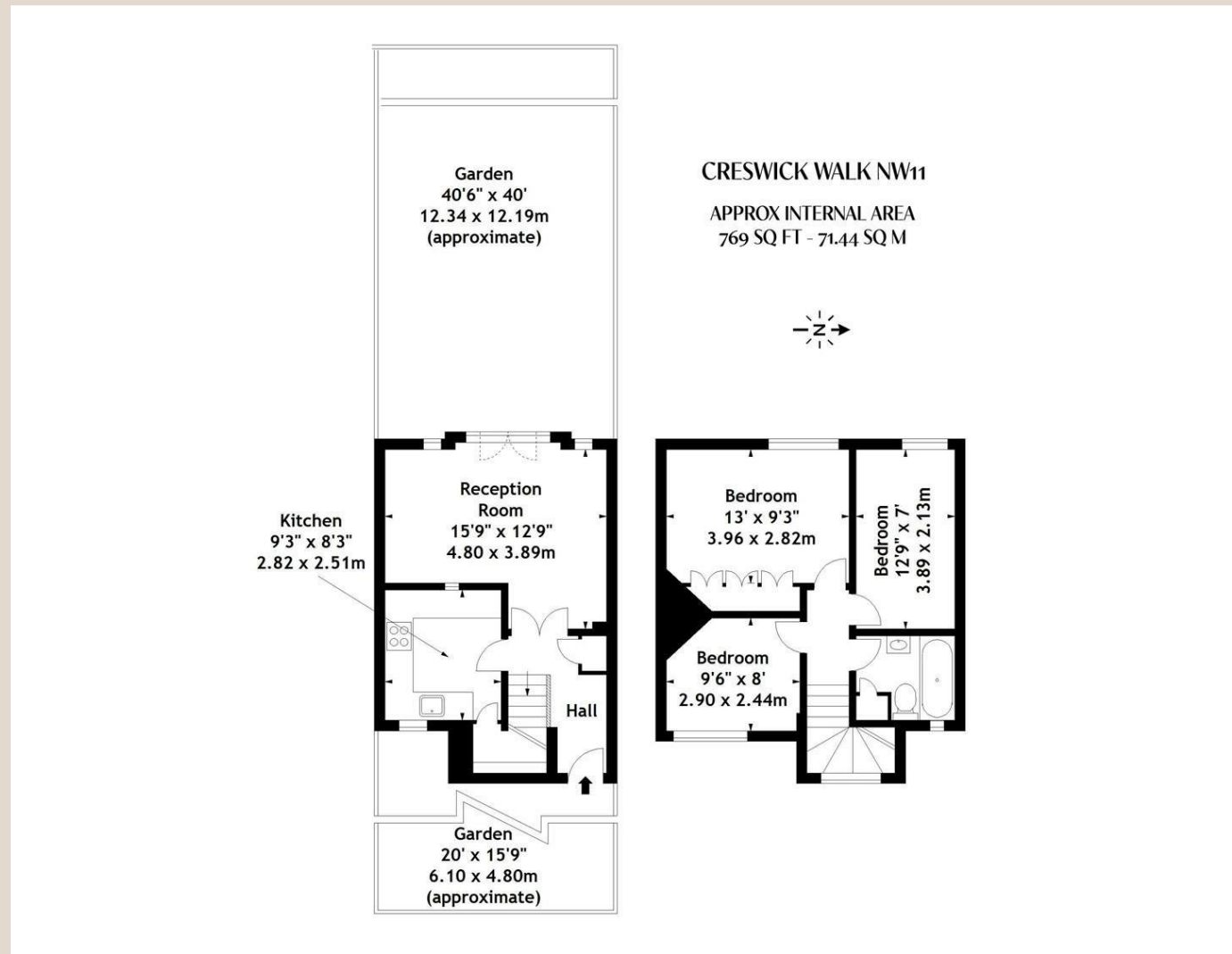
A well presented three bedroom cottage ideally positioned 0.2m from the local amenities that Temple Fortune has to offer. This quaint property benefits from having modern fixtures and fittings and comprises, spacious reception room with French doors onto a superb south facing private garden, separate fully fitted kitchen, principal bedroom with built in storage, two further bedrooms and a family bathroom.

-
- South Facing Private Garden
 - Fully Fitted Kitchen
 - Permit Parking
 - 3 Bedrooms
 - Family Bathroom

Council Tax Band: F
EPC: D







Energy Efficiency Rating		Current	Potential
Very energy efficient - lower running costs			
(92 plus)	A		
(81-91)	B		86
(69-80)	C		
(55-68)	D	65	
(39-54)	E		
(21-38)	F		
(1-20)	G		
Not energy efficient - higher running costs			
England & Wales		EU Directive 2002/91/EC	