





## Princess Mews | London | NW3

£860 Per Week |

 2  2  1  C

**ADN**  
RESIDENTIAL

A well presented two bedroom, two bathroom mews house set over three floors located in the centre of Belsize Village situated on a private cobbled Mews. The property offers well proportioned rooms and comprises, two double bedrooms with hard oak flooring, an open plan kitchen/living room with large scale ceramic floor tiles throughout, en-suite shower room in the principal bedroom and a further shower room. Additional benefits include fitted wardrobes, an allocated car parking space and air conditioning. Princess Mews is conveniently located 0.3m for the amenities & transport links of Hampstead & Belsize Park.

- 
- 2 Bedrooms
  - 2 Bathrooms
  - Mews House
  - Open Plan Kitchen/Reception Room
  - Private Car Space
  - Air Conditioning
- 

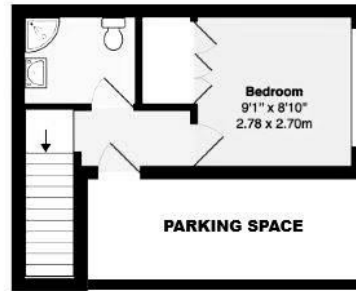
Council Tax Band: G  
EPC: C



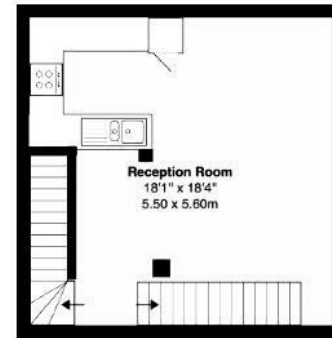




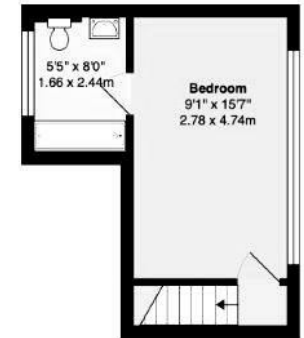
Princess Mews NW3



Ground Floor



1st floor



2nd floor

Gross Internal Area: 738 ft<sup>2</sup> ... 68.6 m<sup>2</sup>

Ceiling Height 2.4 m Ground floor and 1st floor, 3.04 m on the 2nd floor  
 All measurements are approximate and for identification guideline purposes only, not to scale.  
 Compliant with the RICS code of measuring practice



Energy Efficiency Rating		Current	Potential
Very energy efficient - lower running costs			
(92 plus)	A		89
(81-91)	B		
(69-80)	C	74	
(55-68)	D		
(39-54)	E		
(21-38)	F		
(1-20)	G		
Not energy efficient - higher running costs			
England & Wales		EU Directive 2002/91/EC	