





Oval Road | London | NW1

£1,100 Per Week |

 2  2  1  C

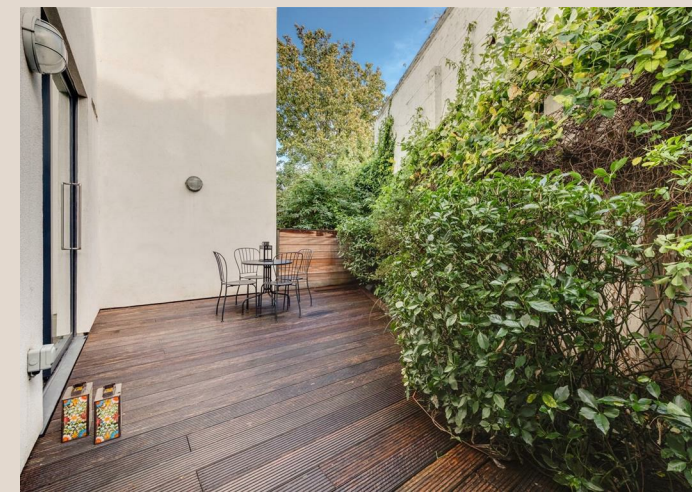
ADN
RESIDENTIAL

A modern, two double bedroom garden apartment set within this sought after development located in NW1. This boutique and well-maintained gated development offers well planned accommodation and comprises an entrance hallway, open-plan reception room with fully-fitted, high end kitchens, modern bathrooms and private outside space (unit dependent - some offer balconies and some offer gardens). The main building also has a lift for convenient access to higher floors.

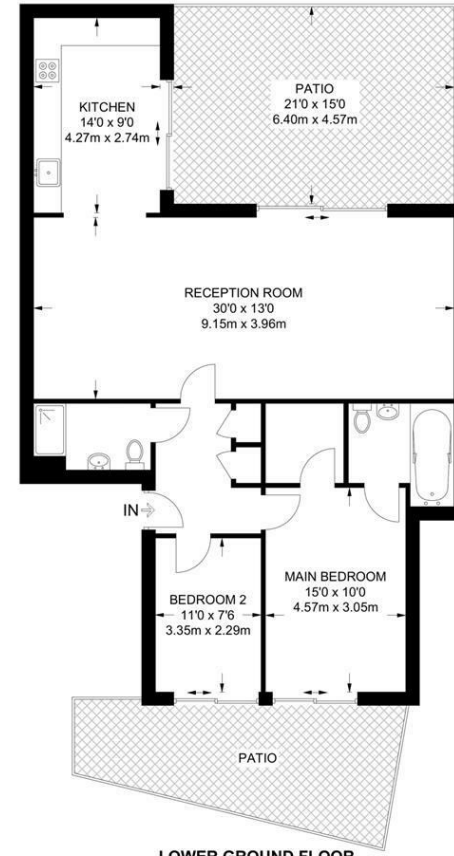
These luxurious properties can be offered unfurnished, part-furnished or fully furnished, along with soft furnishings and dress items by separate negotiation, to enable a full turn-key approach.

- 2 Bedrooms
- 2 Bathrooms
- Gated Development
- 2 Private Decked Terraces
- Modern Finishes
- Car Free

Council Tax Band: F
EPC: C

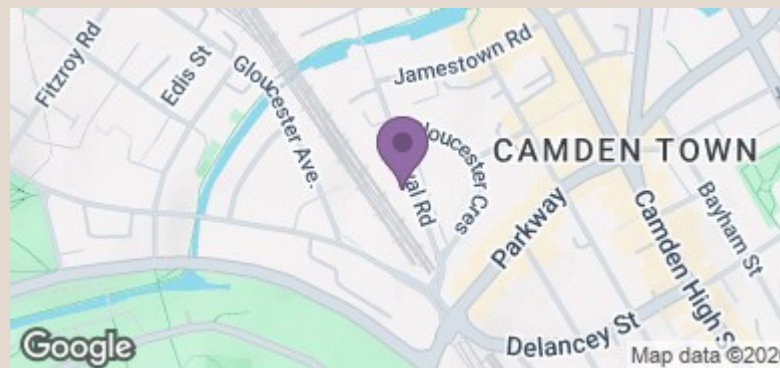






APPROXIMATE GROSS INTERNAL AREA
961 SQ FT / 89.4 SQ M

THIS PLAN HAS BEEN DRAWN FOR ILLUSTRATIVE AND IDENTIFICATION PURPOSES ONLY.



Energy Efficiency Rating		Current	Potential
Very energy efficient - lower running costs			
(92 plus) A			
(81-91) B			
(69-80) C		74	77
(55-68) D			
(39-54) E			
(21-38) F			
(1-20) G			
Not energy efficient - higher running costs			
England & Wales		EU Directive 2002/91/EC	

info@adnresidential.co.uk | 020 7407 5155