



Queens Avenue | London | N10

£575 Per Week |



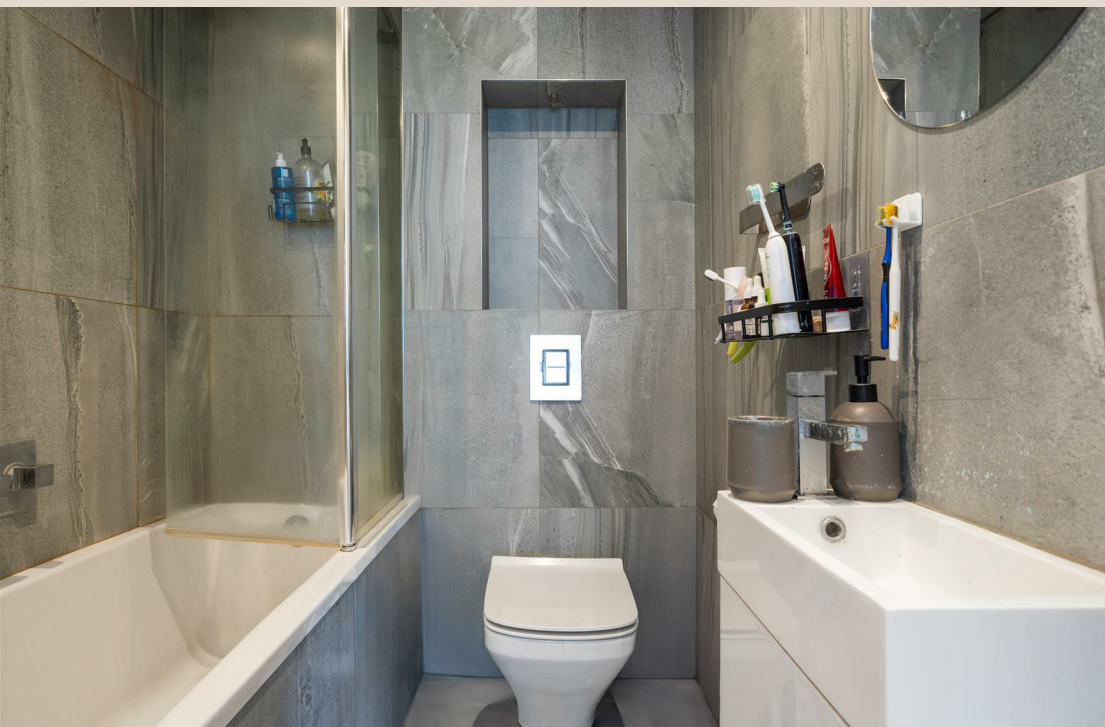
ADN
RESIDENTIAL

A bright and spacious two bedroom apartment arranged over the second floor of a period conversion located in the heart of Muswell Hill. This wonderful apartment offers modern fixtures and fittings and comprises, spacious open plan kitchen/reception room with private balcony, principal bedroom with en-suite bathroom, second bedroom and family bathroom. Further benefits include wooden flooring. Queens Avenue is ideally located 0.1m from the local amenities that Muswell Hill has to offer.

-
- 2 Bedrooms
 - 2 Bathrooms
 - Balcony
 - Open Plan Kitchen/Reception Room
 - Wooden Flooring
 - Permit Parking
-

Council Tax Band: D
EPC: C

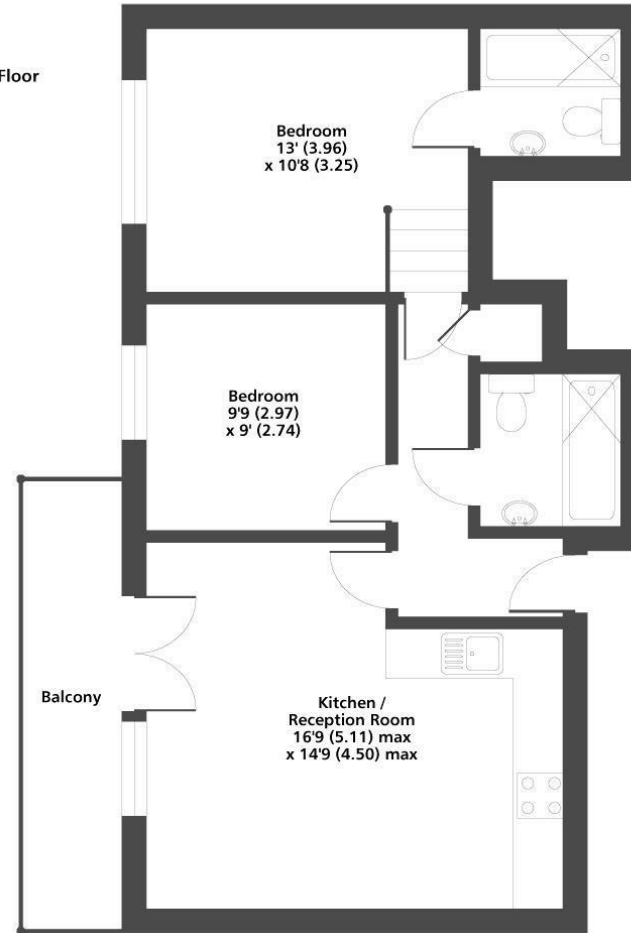






Queens Avenue, N10
Gross Internal Floor Area 601 sqft 55.8 sqm

Second Floor



Energy Efficiency Rating		Current	Potential
Very energy efficient - lower running costs			
(92 plus)	A		
(81-91)	B		
(69-80)	C	77	77
(55-68)	D		
(39-54)	E		
(21-38)	F		
(1-20)	G		
Not energy efficient - higher running costs			
England & Wales		EU Directive 2002/91/EC	

info@adnresidential.co.uk | 020 7407 5155