



Apartment

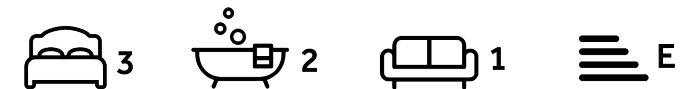
North End Road
Golders Hill Park
London
NW11 7SY

£750 Per Week

Council Tax Band: E

FEATURES

- 3 Bedrooms
- 2 Bathrooms
- Wooden Flooring
- Double Glazed Windows
- Open Plan Kitchen/Reception Room
- Guest W/C
- Modern



ADN
RESIDENTIAL



3 Bedroom Apartment located in London

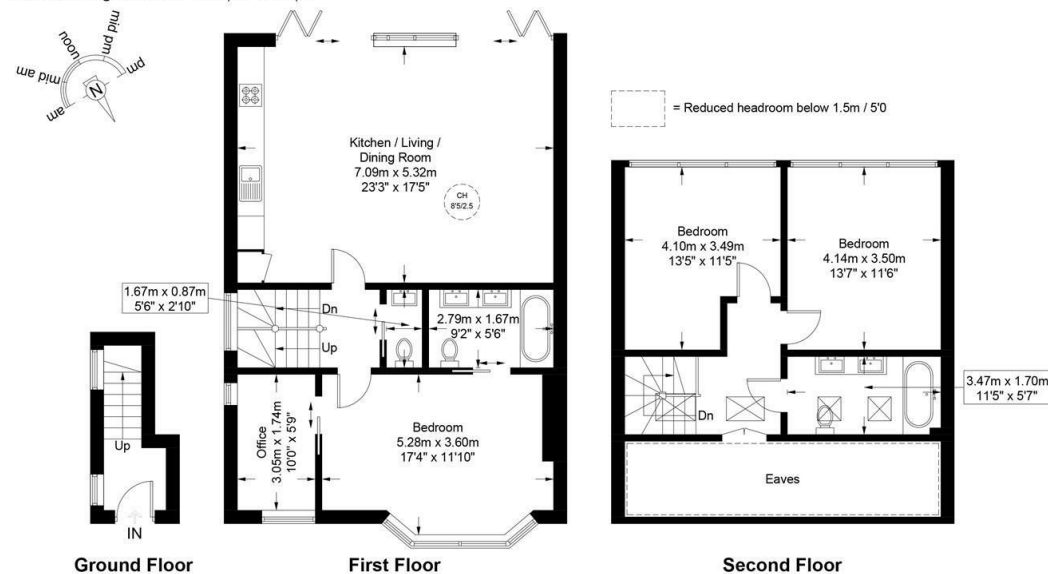
A modern and well presented three bedroom duplex apartment located 0.1m from Golders Hill Park. This fantastic property offers over 1400 sq ft of accommodation and comprises; generous open plan kitchen/reception room, principal bedroom with dressing area and en-suite bathroom, two further double bedrooms, family bathroom and a guest W/C. Additional benefits include double glazed windows and wooden flooring throughout.



North End Road, NW11

Approximate Gross Internal Area = 1461 sq ft / 135.7 sq m

Restricted Height / Eaves = 130 sq ft / 12.1 sq m



Energy Efficiency Rating		
	Current	Potential
Very energy efficient - lower running costs		
(92 plus) A		
(81-91) B		
(69-80) C		
(55-68) D		
(39-54) E	41	53
(21-38) F		
(1-20) G		
Not energy efficient - higher running costs		
England & Wales	EU Directive 2002/91/EC	

Call us on
020 7407 5155

info@adnresidential.co.uk
www.adnresidential.co.uk



This plan is for layout guidance only and is not drawn to scale unless stated. All dimensions, including windows, doors, and the Total Gross Internal Area (GIA), are approximate. For precise measurements, please consult a qualified architect or surveyor before making any decisions based on this plan.



Agents Note: Whilst every care has been taken to prepare these particulars, they are for guidance purposes only. All measurements are approximate and are for general guidance purposes only and whilst every care has been taken to ensure their accuracy, they should not be relied upon and potential buyers are advised to recheck the measurements.

