



## Relton Mews | London | SW7

£1,950 Per Week |



**ADN**  
RESIDENTIAL

A stunning and recently refurbished three double bedroom mews house located in the heart of Knightsbridge being only 0.2m from Harrods. This fantastic property is arranged over three floors and offers over 2400 sq ft of accommodation and comprises, spacious open plan kitchen/reception room and a second generous reception room both benefitting from wooden flooring, principal bedroom with good storage and en-suite shower room, two further bedrooms (one with a spacious en-suite bathroom) and a guest W/C. Additional benefits include a private balcony, outstanding storage and an integral garage suitable for one car.

- 3 Bedrooms
- 3 Bathrooms
- Modern Fixtures
- 2 Reception Rooms
- Balcony
- Garage

Council Tax Band: H  
EPC: C



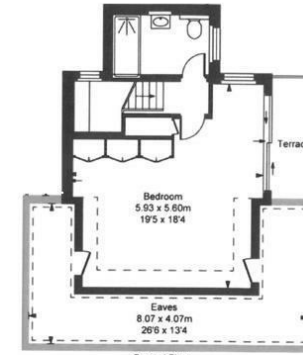




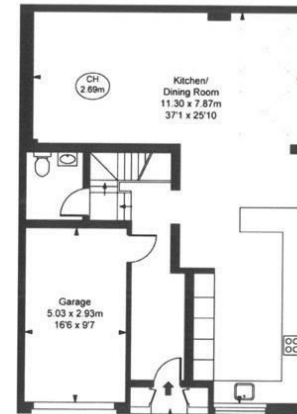
**Relton Mews, SW7**

Approximate Gross Internal Area  
 206.06 sq m / 2,218 sq ft  
 Eaves Storage  
 18.91 sq m / 204 sq ft  
**Total Areas Including Eaves**  
**224.97 sq m / 2,422 sq ft**

(Including restricted height  
 under 1.5m   )  
 (CH = Ceiling Heights)



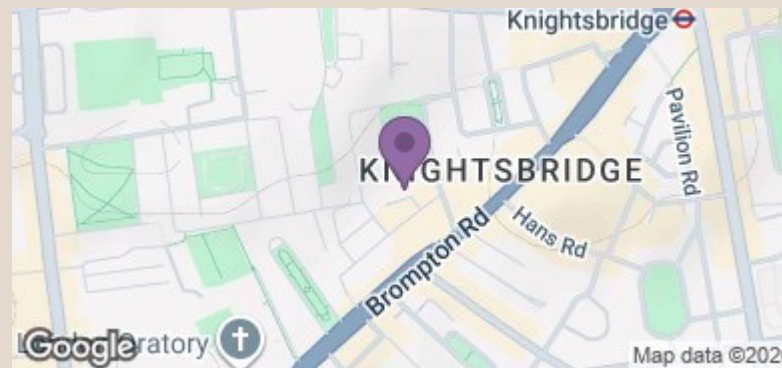
Second Floor  
Approximate Gross Internal Area  
37.10 sq m / 399 sq ft



Ground Floor  
Approximate Gross Internal Area  
88.58 sq m / 953 sq ft



First Floor  
Approximate Gross Internal Area  
80.38 sq m / 865 sq ft



Energy Efficiency Rating		Current	Potential
Very energy efficient - lower running costs			
(92 plus)	A		83
(81-91)	B		
(69-80)	C	70	
(55-68)	D		
(39-54)	E		
(21-38)	F		
(1-20)	G		
Not energy efficient - higher running costs			
England & Wales		EU Directive 2002/91/EC	