



## Tudor Close | London | NW3

£692 Per Week |

 2  1  1  C

**ADN**  
RESIDENTIAL

A bright and spacious first floor apartment located 0.1m from the local shops and amenities that Belsize Park has to offer. This fantastic property has been recently refurbished and comprises, spacious reception room, dining room, separate fully fitted kitchen, two double bedrooms, family bathroom and guest W.C. additional benefits include unreserved off street parking and communal gardens.

- 
- Two double bedrooms
  - Dining Room
  - Family Bathroom
  - Communal Gardens
  - Reception Room
  - Fully Fitted Kitchen
  - Guest W/C
  - Unreserved Off Street Parking
- 

Council Tax Band: E  
EPC: C

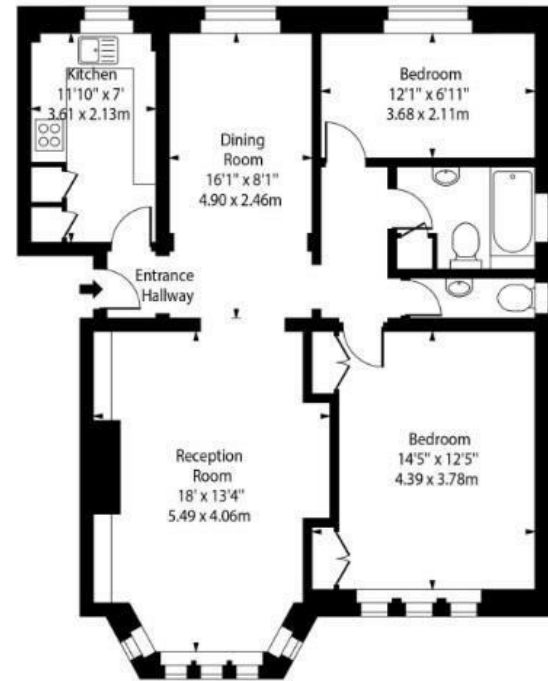




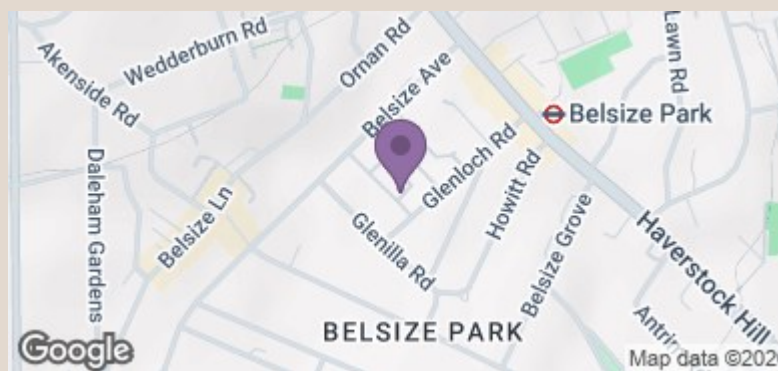


TUDOR CLOSE, NW3

FIRST FLOOR



APPROX INTERNAL AREA  
848 SQ FT/79 SQ M



Energy Efficiency Rating		Current	Potential
Very energy efficient - lower running costs			
(92 plus)	A		
(81-91)	B		
(69-80)	C		
(55-68)	D		
(39-54)	E		
(21-38)	F		
(1-20)	G		
Not energy efficient - higher running costs			
England & Wales		71	83
EU Directive 2002/91/EC			