



Apartment

**Haverstock Hill**

**Belsize Park**

**London**

**London**

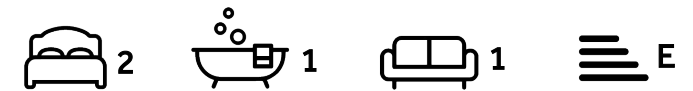
**NW3 2AY**

**£575 Per Week**

**Council Tax Band: E**

**FEATURES**

- 2 Double Bedrooms
- Fully Fitted Kitchen
- Heating Included
- Spacious Reception Room
- Balcony
- Communal Garden

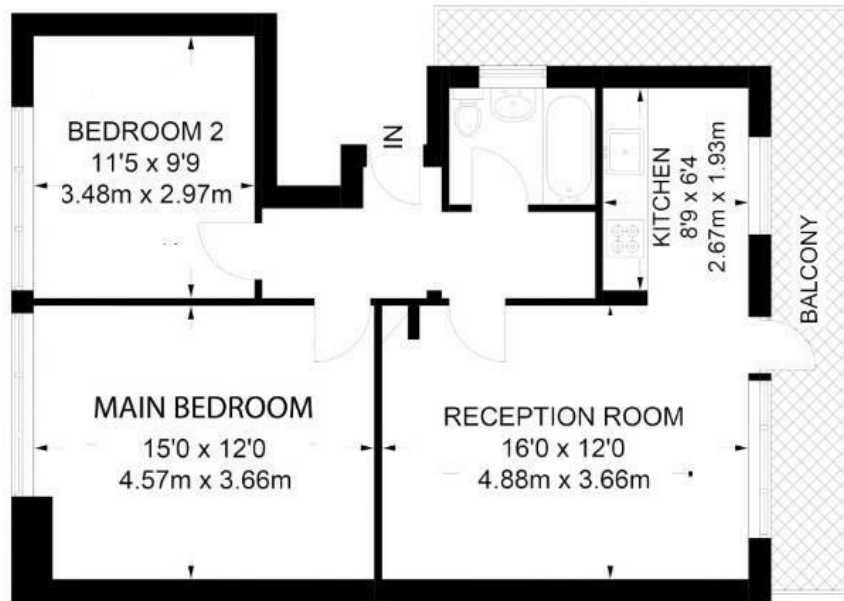


**ADN**  
RESIDENTIAL



# 2 Bedroom Apartment located in London

HEATING INCLUDED. A bright and well presented two double bedroom apartment arranged over the top (third) floor of a well presented period property located in Belsize Park. This wonderful property offers 638 sq ft of accommodation and comprises, semi open plan kitchen/reception room with wooden flooring and access onto a private balcony, two double bedrooms and a family bathroom. Additional benefits include communal gardens.



THIRD FLOOR  
638 SQ FT - 59.30 SQ M  
NOT TO SCALE

Energy Efficiency Rating		
	Current	Potential
Very energy efficient - lower running costs		
(92 plus) <b>A</b>		
(81-91) <b>B</b>		
(69-80) <b>C</b>		
(55-68) <b>D</b>		64
(39-54) <b>E</b>	49	
(21-38) <b>F</b>		
(1-20) <b>G</b>		
Not energy efficient - higher running costs		
<b>England &amp; Wales</b>	EU Directive 2002/91/EC	

Call us on

**020 7407 5155**

[info@adnresidential.co.uk](mailto:info@adnresidential.co.uk)

[www.adnresidential.co.uk](http://www.adnresidential.co.uk)

Agents Note: Whilst every care has been taken to prepare these particulars, they are for guidance purposes only. All measurements are approximate and are for general guidance purposes only and whilst every care has been taken to ensure their accuracy, they should not be relied upon and potential buyers are advised to recheck the measurements.

**ADN**  
RESIDENTIAL