



Winchester Road | London | NW3

£750 Per Week |



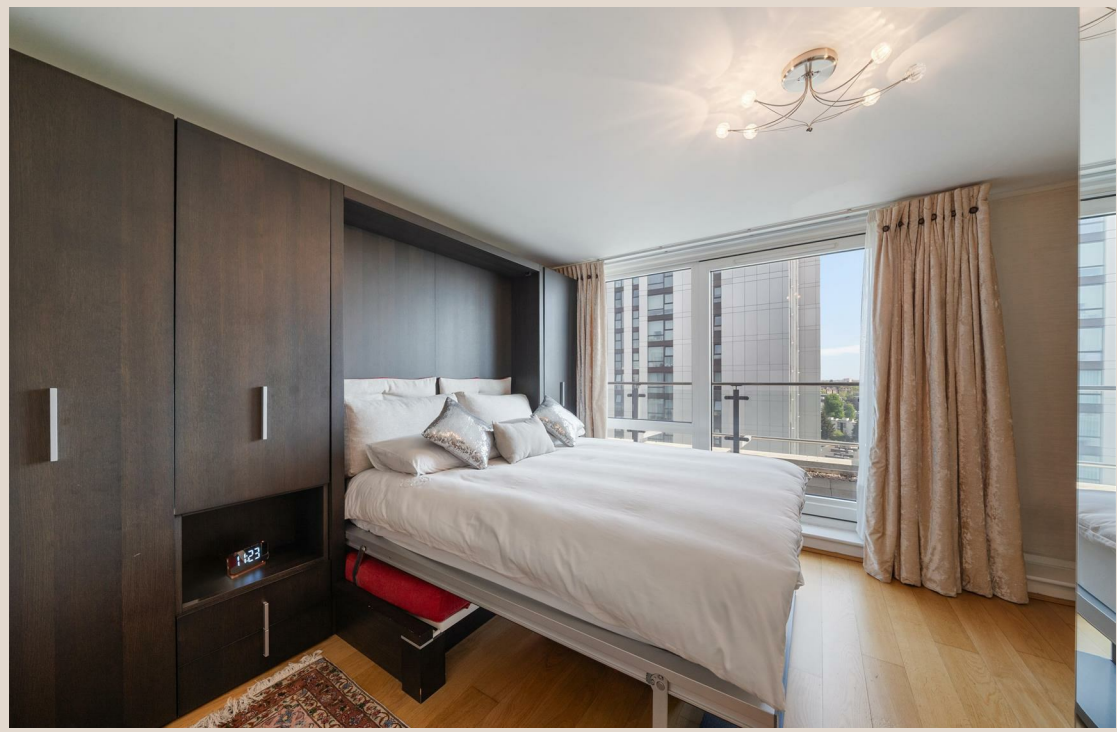
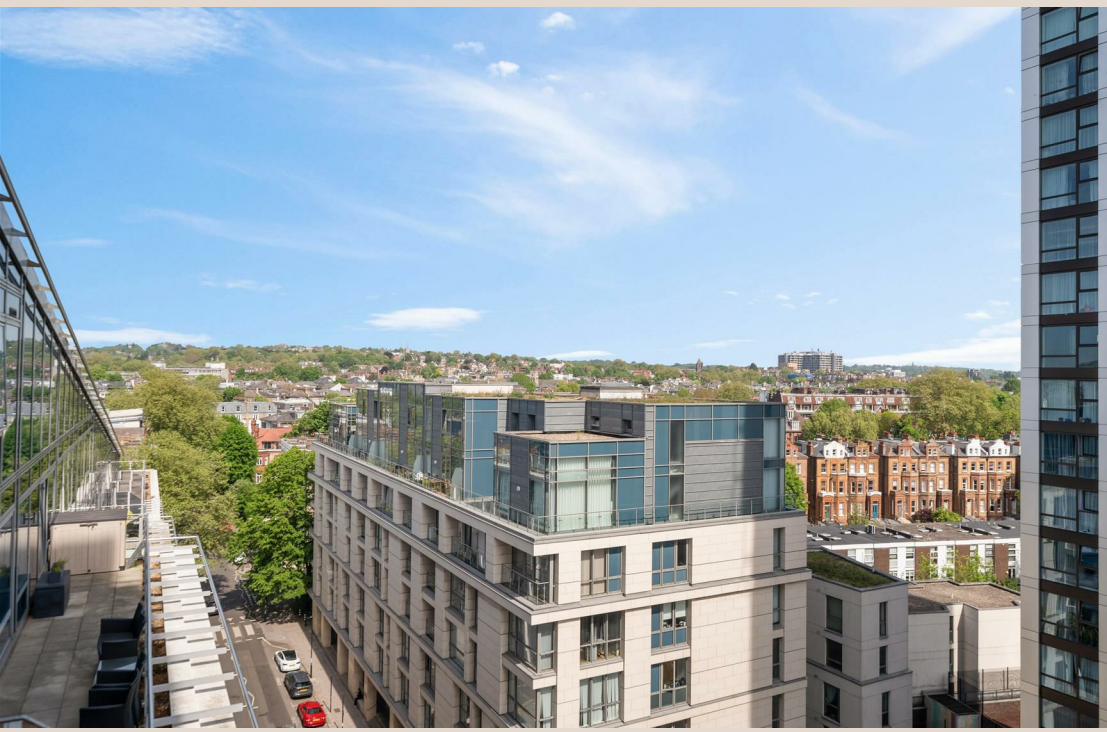
ADN
RESIDENTIAL

A stunning and well presented one bedroom apartment situated on the ninth floor of a popular block benefitting from 24 hour concierge. This bright apartment offers 721 sq ft of well planned accommodation and comprises, open plan kitchen/reception with access onto a generous private terrace, principal bedroom with built in storage and en-suite shower room, good storage and an additional bathroom. Further benefits include wooden flooring and double glazed windows.

- 30 Ft Private Roof Terrace
- 24 Hour Concierge
- Open Plan Kitchen/Reception Room
- One Bedroom
- 2 Bathrooms
- Wooden Flooring

Council Tax Band: E
EPC: C

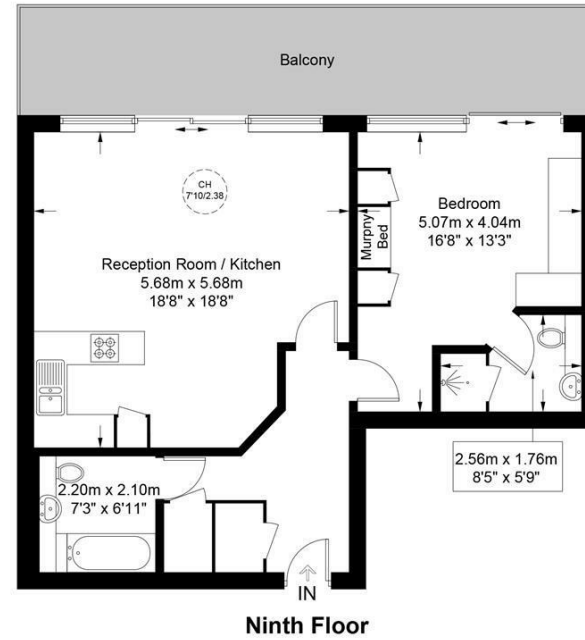
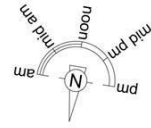






The Visage, NW3

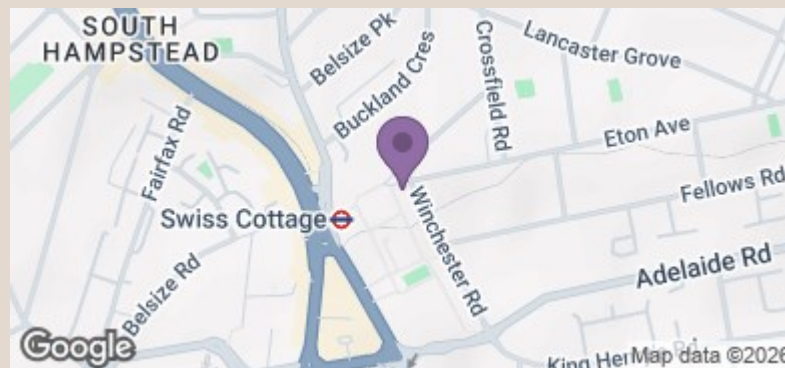
Approximate Gross Internal Area = 721 sq ft / 67.0 sq m



Ninth Floor



This plan is for layout guidance only and is not drawn to scale unless stated. All dimensions, including windows, doors, and the Total Gross Internal Area (GIA), are approximate. For precise measurements, please consult a qualified architect or surveyor before making any decisions based on this plan.



Energy Efficiency Rating		Current	Potential
Very energy efficient - lower running costs			
(92 plus)	A		
(81-91)	B		
(69-80)	C		
(55-68)	D		
(39-54)	E		
(21-38)	F		
(1-20)	G		
Not energy efficient - higher running costs			
England & Wales		71	84
EU Directive 2002/91/EC			

info@adnresidential.co.uk | 020 7407 5155