



Kidderpore Avenue | London | NW3

£850 Per Week |

 2  2  1  B

ADN
RESIDENTIAL

A modern two double bedroom apartment situated on the ground floor of this fantastic development benefitting from 24 hour concierge, located in Hampstead NW3. The apartment consists of a double reception room with bay window and access onto a private roof terrace/patio, separate fully fitted kitchen, principal bedroom with en-suite bathroom and built in storage, second double bedroom, shower room and good storage throughout. Additional benefits include swimming pool and gym facilities and underground parking for two cars.

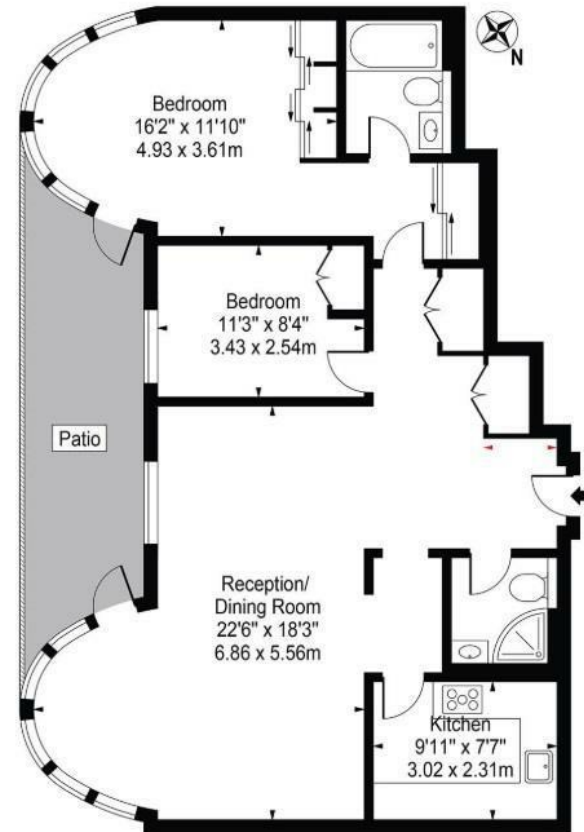
-
- 2 Bedrooms
 - Separate Kitchen
 - Terrace
 - 24 Hour Concierge
 - Double Reception Room
 - 2 Bathrooms
 - Underground Parking For Two Cars
 - Swimming Pool & Gym
-

Council Tax Band: F
EPC: B



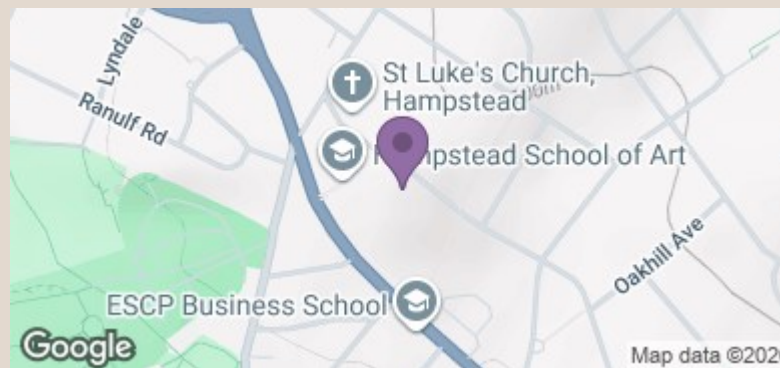


WESTFIELD



GROUND FLOOR - APPROX GROSS INTERNAL AREA - 963 SQ FT - 89.47 SQ M

NOT TO SCALE



Energy Efficiency Rating		Current	Potential
Very energy efficient - lower running costs			
(92 plus)	A		
(81-91)	B	82	82
(69-80)	C		
(55-68)	D		
(39-54)	E		
(21-38)	F		
(1-20)	G		
Not energy efficient - higher running costs			
England & Wales		EU Directive 2002/91/EC	