



## St. Anns Terrace | London | NW8

£995 Per Week |

 3  3  1  C

**ADN**  
RESIDENTIAL

A modern and well presented three double bedroom triplex apartment situated in the centre of St Johns Wood. This fantastic property offers well proportioned rooms and comprises: spacious reception room with floor to ceiling windows, separate fully fitted kitchen, three double bedrooms, 2 bathrooms, shower room and a private patio. Additional benefits include its own private entrance and wooden flooring.



- 3 Double Bedrooms
- 3 Bathrooms
- Private Entrance
- Triplex Apartment
- Private Patio
- Spacious Reception Room
- Wooden Flooring

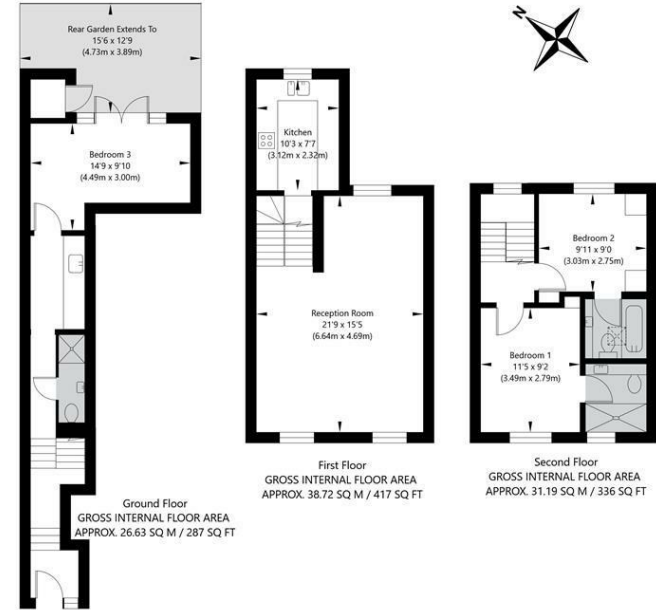
Council Tax Band: E  
EPC: C





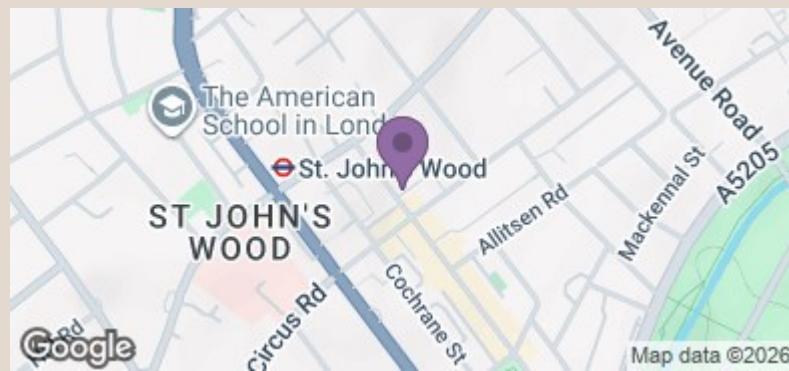


St Ann's Terrace, London NW8 6PJ



APPROXIMATE GROSS INTERNAL FLOOR AREA 96.54 SQ M / 1040 SQ FT  
THIS FLOOR PLAN IS FOR ILLUSTRATIVE PURPOSES ONLY AND  
SHOULD BE USED FOR THIS PURPOSE BY PROSPECTIVE APPLICANTS AS ITS NOT TO SCALE.

(c) AMBERSHORE PIX LIMITED / PHOTO - VIDEO - FLOOR PLANS / 0800 999 1577 / WWW.AMBERSHOREPIX.CO.UK



Energy Efficiency Rating		Current	Potential
Very energy efficient - lower running costs			
(92 plus)	A		
(81-91)	B		
(69-80)	C		
(55-68)	D		
(39-54)	E		
(21-38)	F		
(1-20)	G		
Not energy efficient - higher running costs			
England & Wales		69	75
		EU Directive 2002/91/EC	

info@adnresidential.co.uk | 020 7407 5155