



# Finchley Road | London | NW11

£475 Per Week |



**ADN**  
RESIDENTIAL

A fantastic one bedroom apartment arranged on the third floor of this exclusive development offering underground parking for one car, air conditioning, lift, residents gym, communal gardens and concierge. This wonderful apartment is located 0.5m from Golders Green underground station (Northern Line) and comprises; spacious open plan kitchen/reception room with access to private terrace, principal bedroom with built in storage, family bathroom and an external storage room.

- 
- Open Plan Kitchen/Reception Room
  - Double Bedroom
  - Terrace
  - Lift
  - Underground Parking
  - Gym
  - Concierge
- 

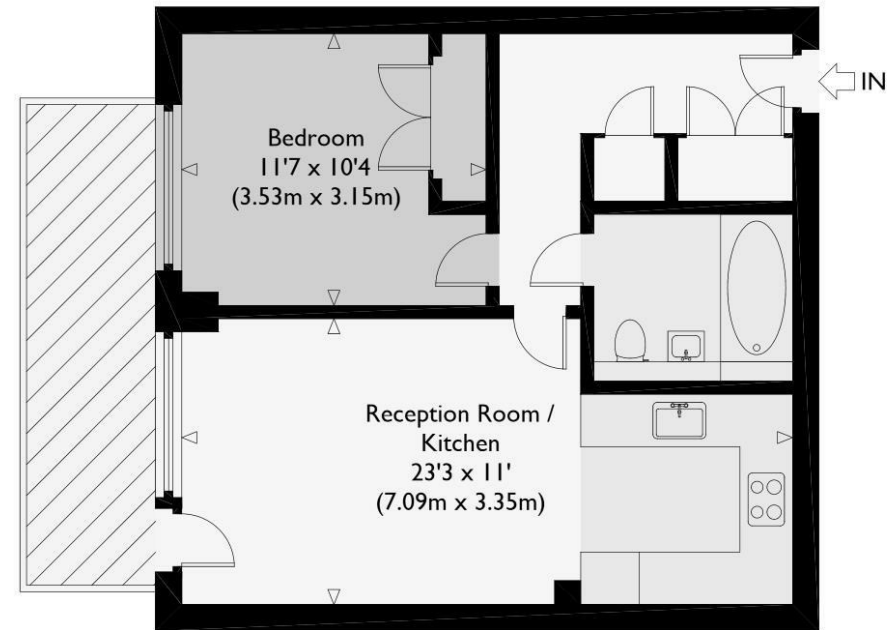
Council Tax Band: D  
EPC: B





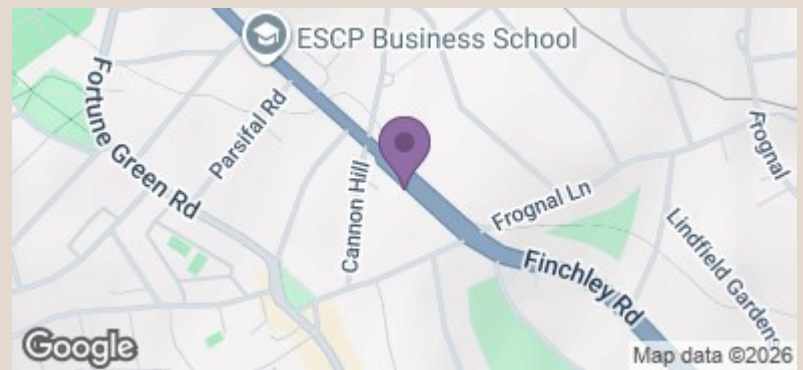
# Finchley Road, NW11

Approximate Gross Internal Floor Area : 505 sq ft / 46.9 sq m



Third Floor

Illustration for identification purposes only, measurements are approximate, not to scale.



Energy Efficiency Rating		Current	Potential
Very energy efficient - lower running costs			
(92 plus)	A		
(81-91)	B	82	82
(69-80)	C		
(55-68)	D		
(39-54)	E		
(21-38)	F		
(1-20)	G		
Not energy efficient - higher running costs			
England & Wales		EU Directive 2002/91/EC	