



Heath View | London | N2

£495 Per Week |

 2  1  1  C

ADN
RESIDENTIAL

A modern and well presented two double bedroom apartment offering well proportioned rooms located in East Finchley. This property has been finished to a high standard and comprises, Spacious 27" reception room, fully fitted separate kitchen, two double bedrooms and a family bathroom. Additional benefits include private entrance, communal gardens and double glazed windows.

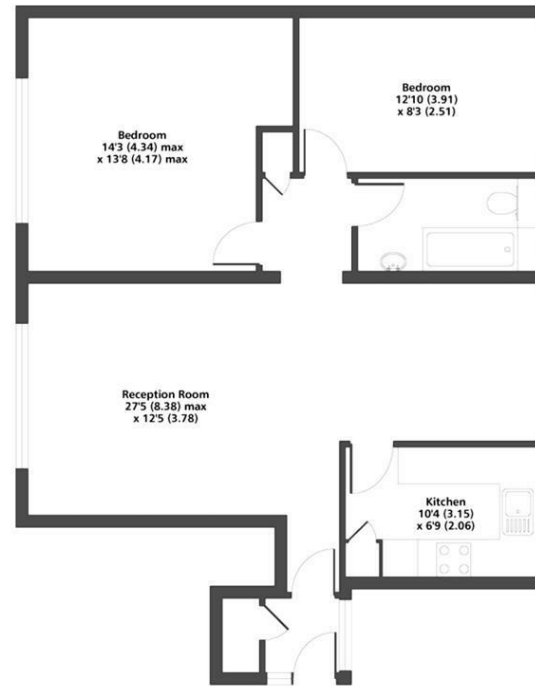


- Modern Fixtures
- 2 Bedrooms
- Luxury Bathroom
- Fully Fitted Kitchen
- 27" Reception Room
- Communal Gardens
- Wooden Flooring

Council Tax Band: E
EPC: C

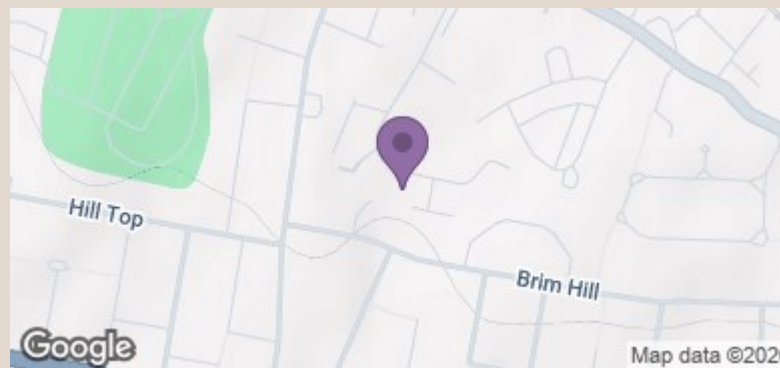






Heath View N2
Gross Internal Floor Area 811 sqft 75.3 sqm
Copyright nichecom.co.uk 2019 REF : 463499

Whilst every attempt has been made to ensure the accuracy of the floor plan contained here, measurements of doors, windows and rooms are approximate and no responsibility is taken for any error, omission or misstatement. These plans are for representation purposes only as defined by RICS Code of Measuring Practice and should be used as such by any prospective purchaser. Specifically no guarantee is given on the gross internal floor area of the property if quoted on this plan and any figure given is for initial guidance only and should not be relied on as a basis of valuation.



Energy Efficiency Rating		Current	Potential
Very energy efficient - lower running costs			
(92 plus) A			
(81-91) B			
(69-80) C		74	77
(55-68) D			
(39-54) E			
(21-38) F			
(1-20) G			
Not energy efficient - higher running costs			
England & Wales		EU Directive 2002/91/EC	

info@adnresidential.co.uk | 020 7407 5155