



Marylebone High Street | London | W1U

£519 Per Week |



**ADN**  
RESIDENTIAL

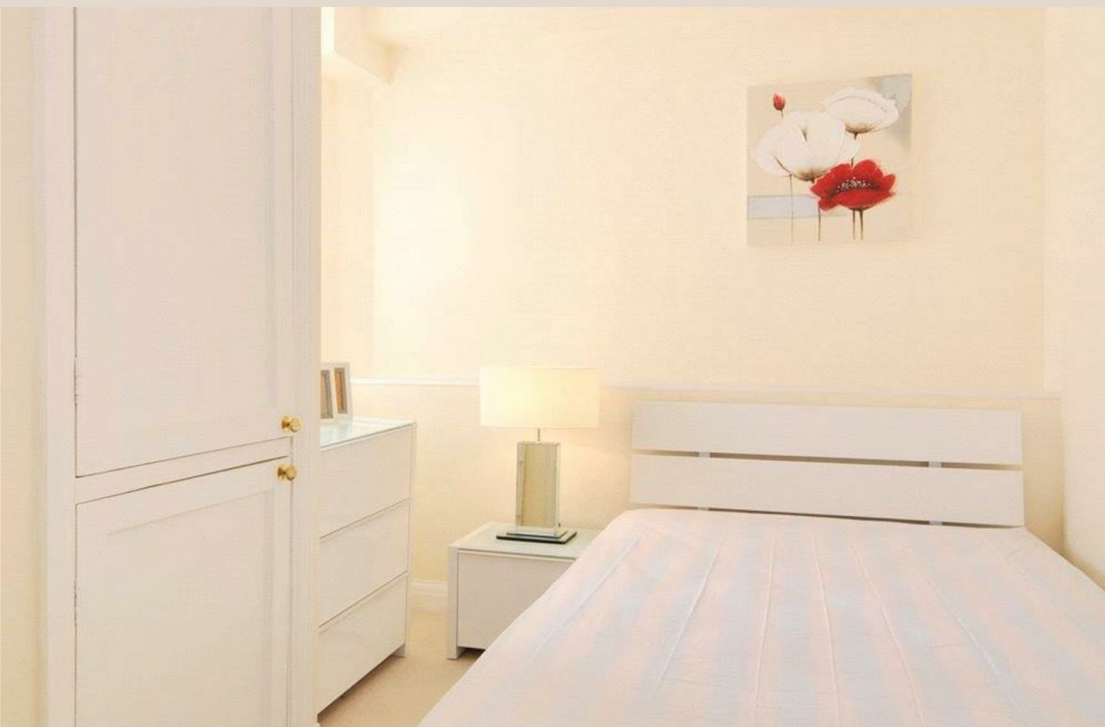
A modern and well presented one bedroom apartment situated on the fourth floor (with lift) of a well presented period property located on Marylebone High Street. Benefits include wooden flooring, bright reception room and good storage throughout.



- Modern apartment
- One Bedroom
- Kitchen
- Wooden flooring
- Reception Room
- Lift



Council Tax Band: E  
EPC: C

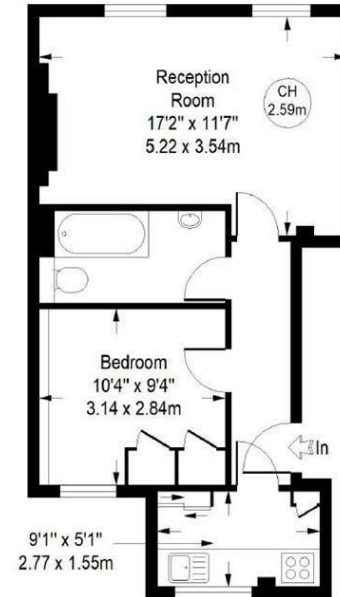




# Marylebone High Street, W1U

Approximate Gross Internal Area = 432 sq ft / 40.13 sq m

Key :  
CH - Ceiling Height



## Fourth Floor

Illustration for identification purposes only,  
measurements are approximate, not to scale. (ID AA00194)



Energy Efficiency Rating		Current	Potential
Very energy efficient - lower running costs			
(92 plus)	A		
(81-91)	B		
(69-80)	C	75	80
(55-68)	D		
(39-54)	E		
(21-38)	F		
(1-20)	G		
Not energy efficient - higher running costs			
England & Wales		EU Directive 2002/91/EC	

info@adnresidential.co.uk | 020 7407 5155