



Finchley Road | London | NW11

£346 Per Week |



ADN
RESIDENTIAL

A bright and spacious one bedroom apartment arranged on the second floor benefitting from having a private roof terrace. This well appointed property comprises, open plan kitchen/reception room, principal bedroom and a family bathroom. Finchley road is ideally located 0.6m from Golders Green underground station. (Northern Line)

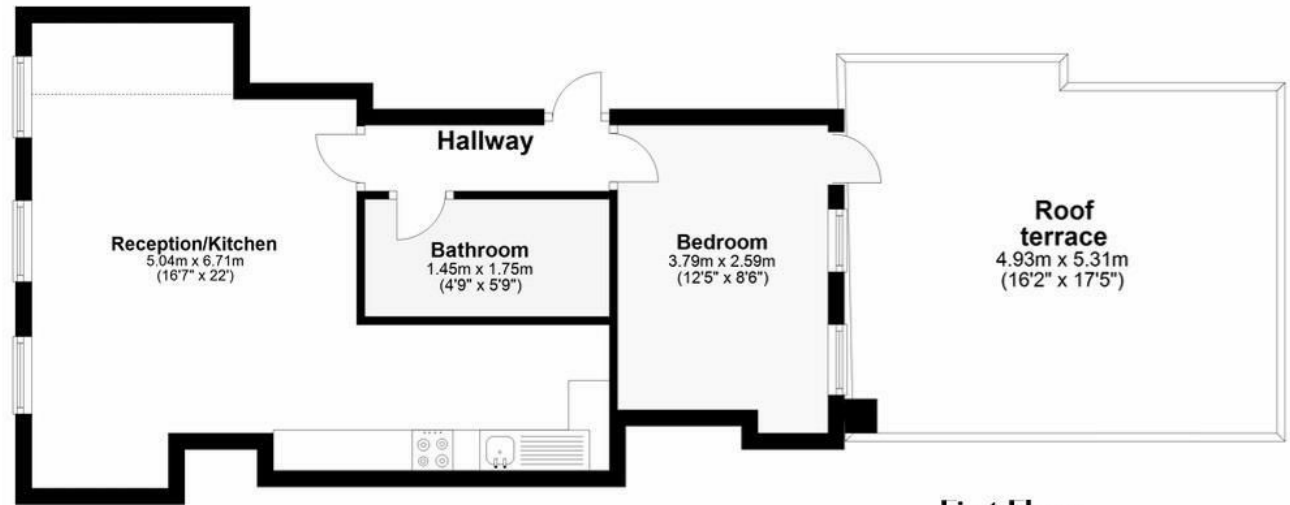
-
- Roof Terrace
 - Double Bedroom
 - Wooden Flooring
 - Reception Room
 - Bathroom
-

Council Tax Band: C
EPC: C

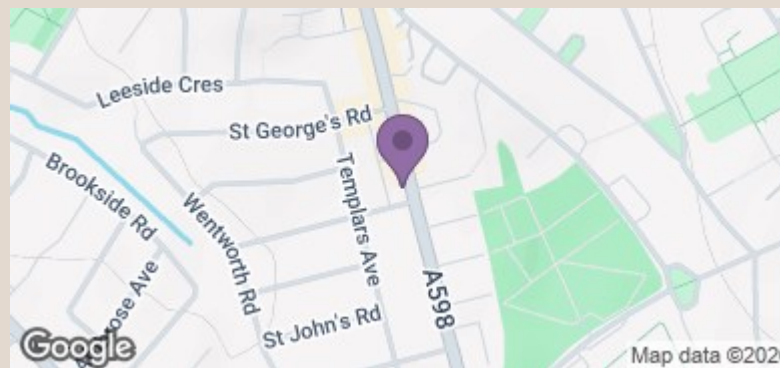




Finchley Road NW11



First Floor



Energy Efficiency Rating		Current	Potential
Very energy efficient - lower running costs			
(92 plus)	A		
(81-91)	B		
(69-80)	C	71	76
(55-68)	D		
(39-54)	E		
(21-38)	F		
(1-20)	G		
Not energy efficient - higher running costs			
England & Wales		EU Directive 2002/91/EC	