



## Buckland Crescent | London | NW3

£775 Per Week |

 2  2  1  D

**ADN**  
RESIDENTIAL

A spacious two double bedroom apartment arranged over the entire raised ground floor of a beautiful period property located 0.2m from Swiss Cottage underground station. (Jubilee Line) This wonderful apartment offers well planned accommodation and comprises, bright reception room, separate fully fitted kitchen, principal bedroom with en-suite bathroom, second double bedroom and a family bathroom. Further benefits include a utility room, wooden flooring and 12ft ceilings.

- Spacious Reception Room
- 2 Bedrooms
- 2 Bathrooms
- Utility Room
- 12ft Ceilings
- Wooden Flooring

Council Tax Band: F  
EPC: D



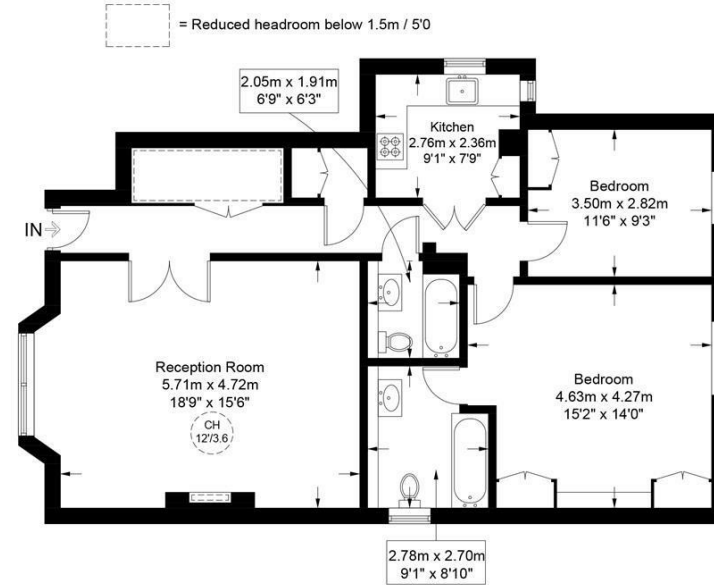
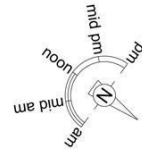




## Buckland Crescent, NW3

Approximate Gross Internal Area = 968 sq ft / 89.9 sq m

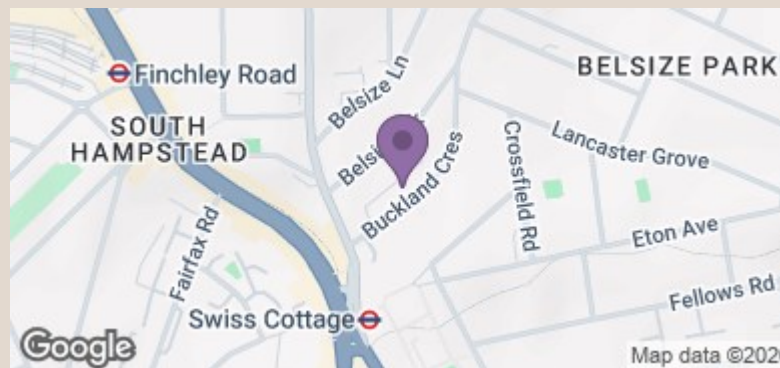
Restricted Height = 33 sq ft / 3.1 sq m



Upper Ground Floor



This plan is for layout guidance only and is not drawn to scale unless stated. All dimensions, including windows, doors, and the Total Gross Internal Area (GIA), are approximate. For precise measurements, please consult a qualified architect or surveyor before making any decisions based on this plan.



Energy Efficiency Rating		Current	Potential
Very energy efficient - lower running costs			
(92 plus)	A		
(81-91)	B		
(69-80)	C		
(55-68)	D	65	80
(39-54)	E		
(21-38)	F		
(1-20)	G		
Not energy efficient - higher running costs			
England & Wales		EU Directive 2002/91/EC	

info@adnresidential.co.uk | 020 7407 5155