

LEASEHOLD



Apartment

North End Road
West Kensington
London
W14 9NU

£1,095,000

Council Tax Band: G

FEATURES

- High Specification
- Spacious Open Plan Kitchen/Reception Room
- 2 Bathrooms
- Wooden Flooring
- 2 Bedrooms
- Principal Bedroom Suite
- Double Glazed Windows
- Guest W.C



ADN
RESIDENTIAL



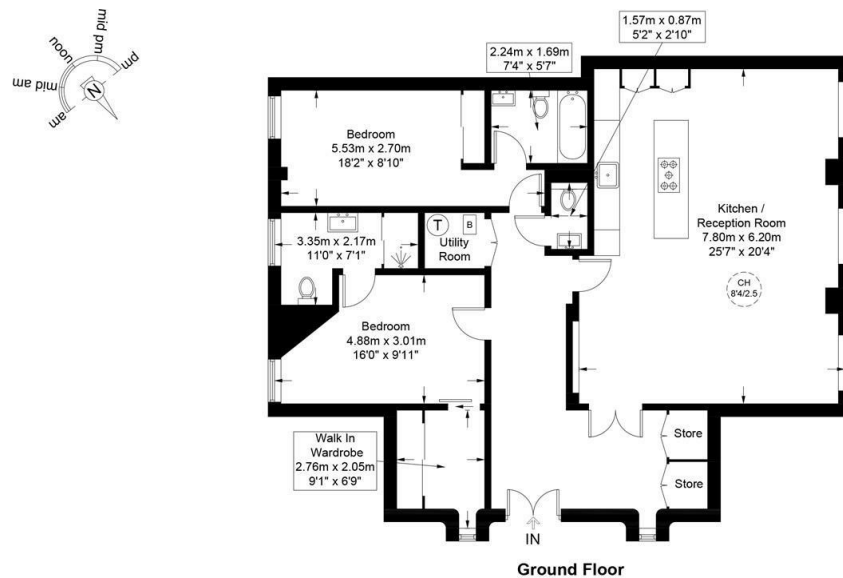
2 Bedroom Apartment located in London

Finished to the highest of standards is this brand newly refurbished two double bedroom apartment arranged over the ground floor of an imposing church conversion dating back to 1887. This outstanding property offers 1250 sq ft of well planned accommodation and comprises, generous open plan kitchen/reception room with dining area and breakfast bar, principal bedroom suite with dressing room and en-suite shower room, second double bedroom with en-suite bathroom and a guest W/C. Additional benefits include herringbone engineered wooden flooring and double glazed windows throughout. The Lourdes Apartments is ideally positioned 0.3m from both West Brompton & West Kensington stations. (District Line)



North End Road, W14

Approximate Gross Internal Area = 1250 sq ft / 116.1 sq m



Energy Efficiency Rating		
	Current	Potential
Very energy efficient - lower running costs		
(92 plus) A		
(81-91) B	82	82
(69-80) C		
(55-68) D		
(39-54) E		
(21-38) F		
(1-20) G		
Not energy efficient - higher running costs		
England & Wales	EU Directive 2002/91/EC	

Call us on
020 7407 5155

info@adnresidential.co.uk
www.adnresidential.co.uk



This plan is for layout guidance only and is not drawn to scale unless stated. All dimensions, including windows, doors, and the Total Gross Internal Area (GIA), are approximate. For precise measurements, please consult a qualified architect or surveyor before making any decisions based on this plan.



Agents Note: Whilst every care has been taken to prepare these particulars, they are for guidance purposes only. All measurements are approximate and are for general guidance purposes only and whilst every care has been taken to ensure their accuracy, they should not be relied upon and potential buyers are advised to recheck the measurements.

