



Eton Rise, Eton College Road | London | NW3

£600 Per Week |



ADN
RESIDENTIAL

A well presented two double bedroom apartment arranged over the third floor of this popular mansion block located 0.5m from Belsize Park underground station. (Northern Line) This bright apartment offers well proportioned rooms and comprises, generous reception room, separate fitted kitchen, two double bedrooms and a shower room. Further benefits include inclusive heating and hot water and a lift.

- Reception Room
- Kitchen
- 2 Double Bedrooms
- Shower Room
- Inclusive Heating & Hot Water
- Permit Parking

Council Tax Band: C
EPC: C

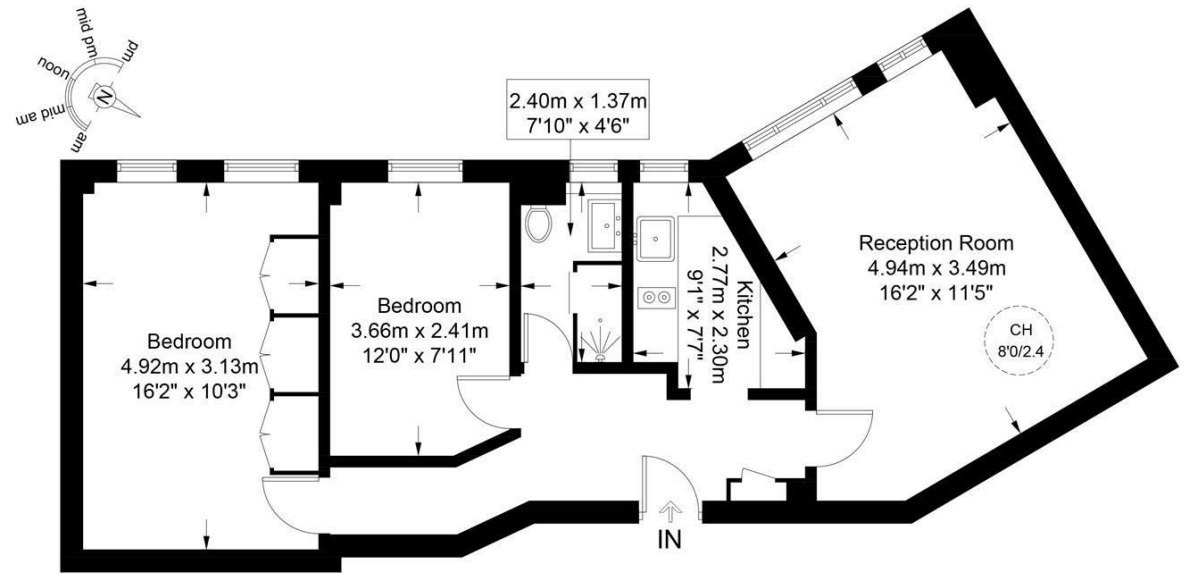






Eton Rise, NW3

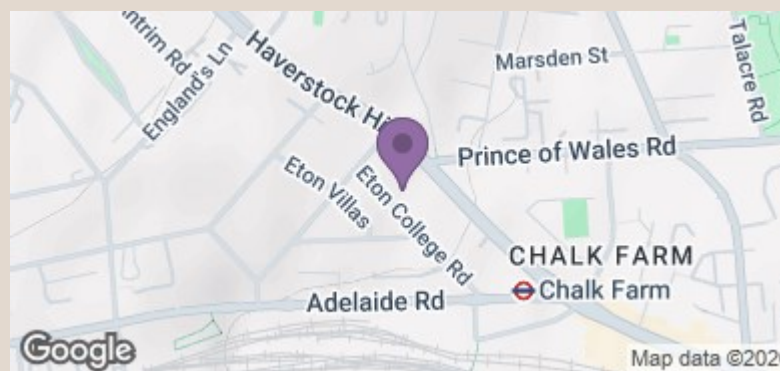
Approximate Gross Internal Area = 681 sq ft / 63.3 sq m



Third Floor



This plan is for layout guidance only and is not drawn to scale unless stated. All dimensions, including windows, doors, and the Total Gross Internal Area (GIA), are approximate. For precise measurements, please consult a qualified architect or surveyor before making any decisions based on this plan.



| Energy Efficiency Rating | | Current | Potential |
|---|---|-------------------------|-----------|
| Very energy efficient - lower running costs | | | |
| (92 plus) | A | | 82 |
| (81-91) | B | | |
| (69-80) | C | 73 | |
| (55-68) | D | | |
| (39-54) | E | | |
| (21-38) | F | | |
| (1-20) | G | | |
| Not energy efficient - higher running costs | | | |
| England & Wales | | EU Directive 2002/91/EC | |