



Fellows Road | London | NW3

£400 Per Week |



ADN
RESIDENTIAL

A bright and spacious one bedroom apartment arranged over the third floor of an imposing period property located in NW3. This charming apartment offers over 500 sq ft of accommodation and comprises, generous reception room with bay window, separate fully fitted kitchen, double bedroom and a family bathroom. Fellows road is ideally positioned 0.2m from Swiss Cottage underground station (Jubilee Line) and the local amenities that Belsize Park has to offer.

- Spacious Reception Room
- Double Bedroom
- Permit Parking
- Separate Fitted Kitchen
- Family Bathroom

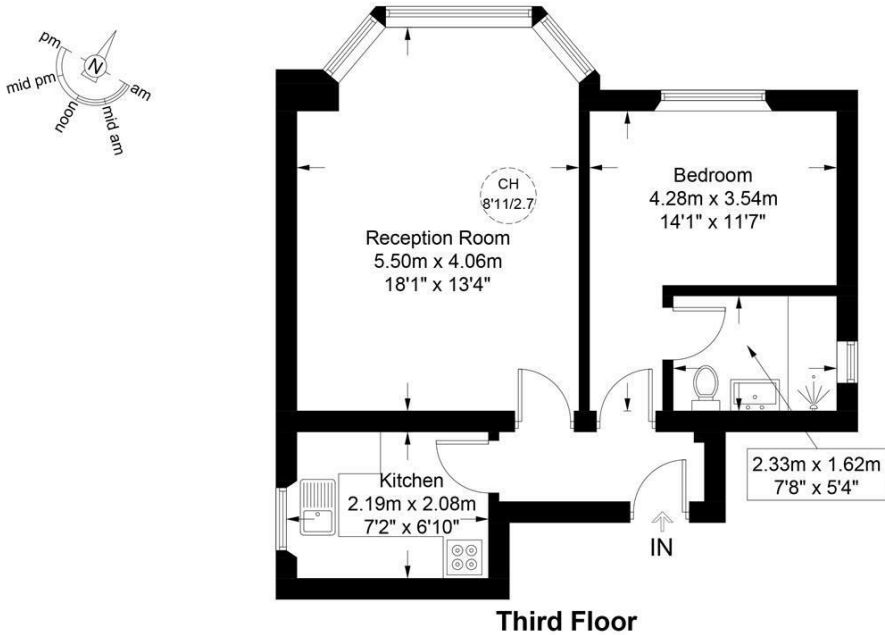
Council Tax Band: D
EPC: C



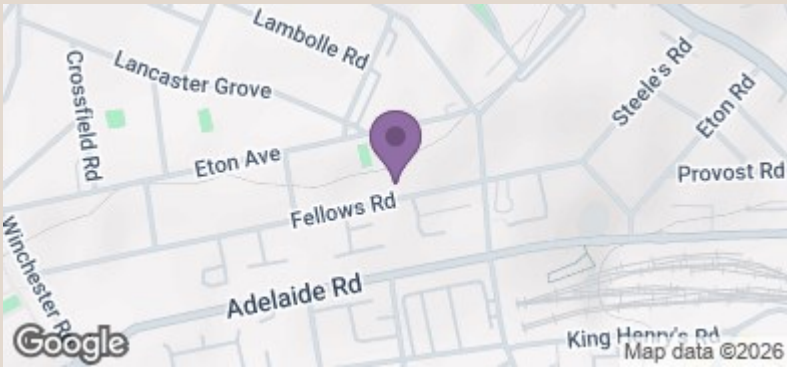


Fellows Road, NW3

Approximate Gross Internal Area = 514 sq ft / 47.8 sq m



This plan is for layout guidance only and is not drawn to scale unless stated. All dimensions, including windows, doors, and the Total Gross Internal Area (GIA), are approximate. For precise measurements, please consult a qualified architect or surveyor before making any decisions based on this plan.



Energy Efficiency Rating		Current	Potential
Very energy efficient - lower running costs			
(92 plus)	A		
(81-91)	B		
(69-80)	C		
(55-68)	D		
(39-54)	E		
(21-38)	F		
(1-20)	G		
Not energy efficient - higher running costs			
England & Wales		77	82
EU Directive 2002/91/EC			